

Zoological collectings in Albania between 2004 and 2010 by the Hungarian Natural History Museum and the Hungarian Academy of Sciences

D. MURÁNYI¹, J. KONTSCHÁN² & Z. FEHÉR¹

Abstract. The Albanian locality data of zoological collectings carried out by the Hungarian Natural History Museum and the Hungarian Academy of Sciences during 30 tours to the Balkans between 2004 and 2010 are enumerated. The localities and methods of collecting are enumerated in chronological order. Sites are marked on the map of Albania.

Keywords. Albania, collections, localities, list.

Traditions of the Hungarian Natural History Museum and the Hungarian Academy of Sciences in exploration of the Albanian fauna dates back to the first quarter of the Twentieth Century. Zoological results of these scientific collectings were published in two monographic issues (Teleki & Csiki, 1923, 1940). With the political transition of the 90's, collecting activity in Albania resumed, and during the last ten years the country became one of the main target for faunistical collecting tours of our institutions. On the basis of the new material gathered in Albania, 74 new taxa were described during the last years: 3 new species of Nematoda (Andrássy, 2009), 1 genus, 11 species and 34 subspecies of Mollusca (Eröss *et al.*, 1999, 2006; Fehér, 2004; Fehér & Eröss, 2009a, 2009b; Fehér *et al.*, 2001, 2010; Riedel *et al.*, 1999; Subai, 2008, 2009; Subai & Fehér, 2006), 1 species of Opiliones (Murányi, 2008), 11 species of Acari (Kontschán, 2003; Mahunka & Mahunka-Papp, 2008; Újvári, 2010), 4 species and 1 subspecies of Plecoptera (Murányi, 2007) and 8 species of Trichoptera (Oláh, 2010; Oláh *et al.*, 2011).

Herein we enumerate the zoological collecting sites of researchers and collaborators in Albania, taken between 2004 and 2010. These includes the data of 30 Balkanian tours taken wholly or partly in Albania, mostly by zoologists but also as side targets of botanical tours. Sites of the previous tours were detailed in Fehér *et al.* (2004). The localities are given in chronological order, as the

followings: district, mountains, settlement, locality and habitat, date (locality code used during the collectings), geocoordinate, elevation, methods of collecting. The localities are presented on the maps of Albania (Figs. 1–5).

24–28.05.2004 (leg. Krisztina Balogh, Zoltán Barina, Krisztián Harnos, Dávid Murányi, Csaba Németh, Kiril Orci)

1: Berat district, Berat, Gorica, house walls, 24.05.2004 (2004/3), N40°42.183' E19°56.938', 65m; singled.

2: Berat district, Tomor Mts, Vodicë, macchia in the vicinity of Vodicë Stream above its bridge, 24.05.2004 (2004/4), N40°40.732' E20°01.576', 100m; singled, waternet.

3: Berat district, Tomor Mts, Leghë, macchia and grasslands in the valley of Vodicë Stream, 24.05.2004 (2004/5), N40°41.651' E20°02.219', 140m; singled, beaten.

4: Berat district, Tomor Mts, Leghë, grassland above the village, 25.05.2004 (2004/6), N40°41.875' E20°02.739', 310m; singled.

5: Berat district, Tomor Mts, Karkanjos, Karkanjos Stream and its gallery beneath the village, 25.05.2004 (2004/7), N40°41.657' E20°03.548', 360m; singled, beaten, waternet.

6: Berat district, Tomor Mts, Karkanjos, macchia above the village, 25.05.2004 (2004/8), N40°41.077' E20°03.921', 440m; singled.

7: Berat district, Tomor Mts, Tomor i Madhë, sidebrook of the Tomor Stream, 25.05.2004 (2004/9), N40°41.198' E20°04.213', 435m; singled, waternet.

¹Dr. Dávid Murányi, Dr. Zoltán Fehér, Magyar Természettudományi Múzeum Állattára (Department of Zoology, Hungarian Natural History Museum), H-1088 Budapest, Baross u. 13, Hungary. E-mail: muranyi@zool.nhmus.hu, feher@zool.nhmus.hu

²Dr. Jenő Kontschán, MTA Zootaxonomiai Kutatócsoport és Magyar Természettudományi Múzeum (Systematic Zoology Research Group of the Hungarian Academy of Sciences, and Hungarian Natural History Museum), H-1088 Budapest, Baross u. 13, Hungary. E-mail: kontscha@zool.nhmus.hu

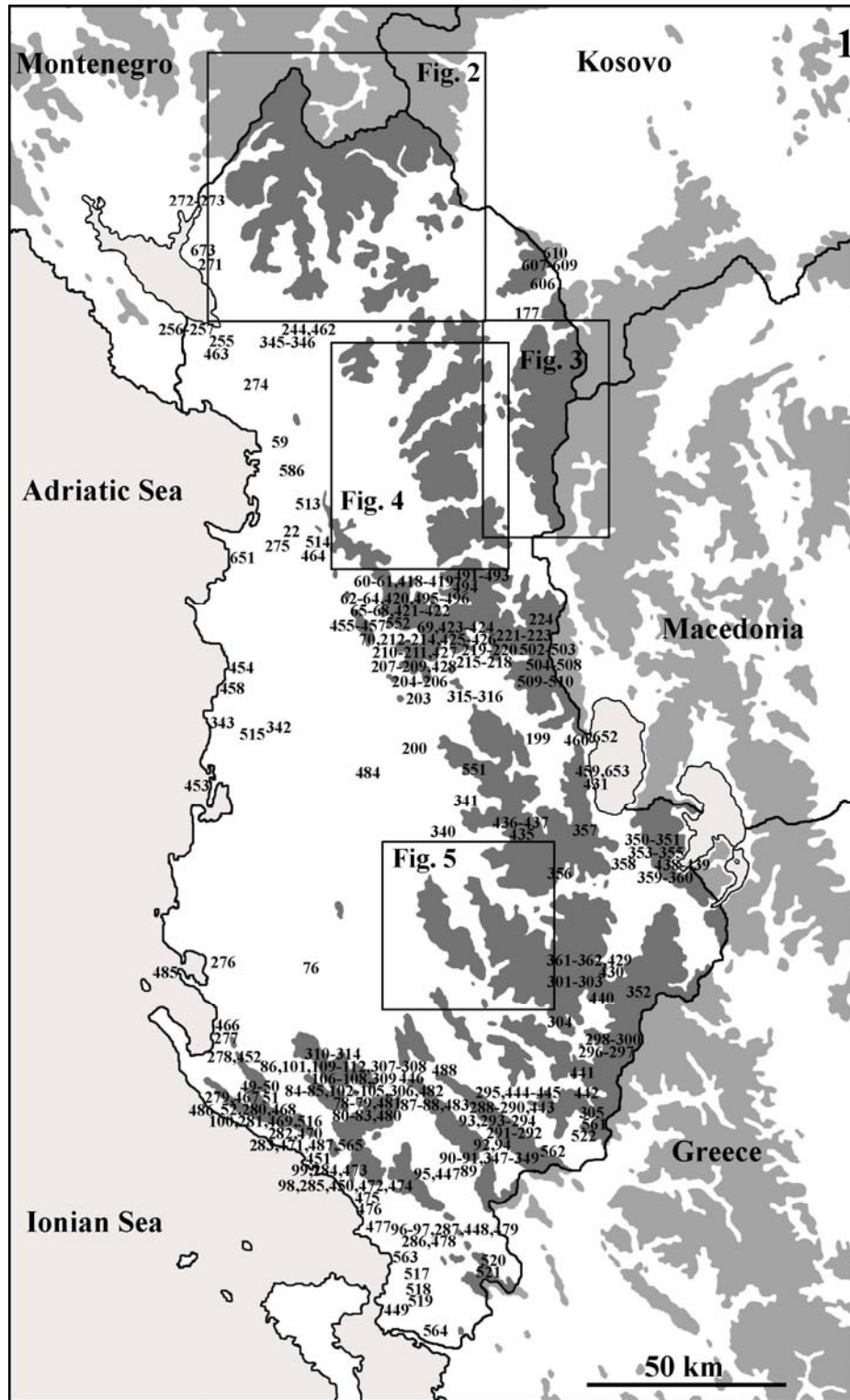
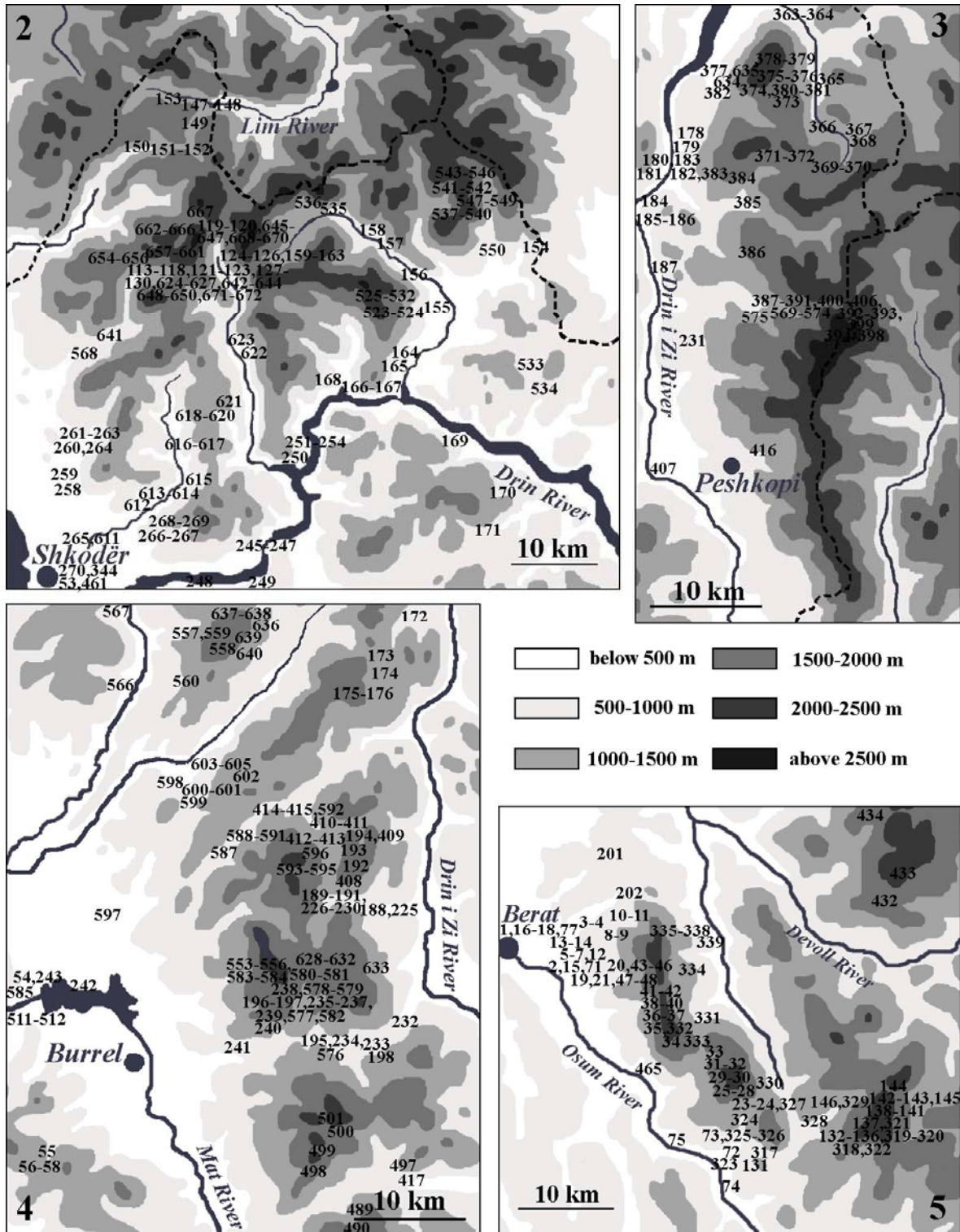


Figure 1. Map of Albania, showing the collecting sites (grey areas are above 1000 metres; the localities in four mountain areas are detailed on Figs 2–5)



Figures 2-5. Maps of Albanian mountain ranges, showing the collecting sites. 2 = Prokletije and Madhë Mts; 3 = Korab and Gjalica e Lumës Mts; 4 = Southern part of Mirditë (Munellë, Pezë, Shent, Lurë area, Dejë, Kreshtës) and Shkanderbeu Mts; 5 = Tomor, Ostrovicë and Vallamarë Mts.

8: Berat district, Tomor Mts, Tomor i Madhë, Kalaja e Tomorit, limestone rocks and rocky grassland, 26.05.2004 (2004/10), N40°42.160' E20°06.568', 1180m; singled, beaten.

9: Berat district, Tomor Mts, Tomor i Madhë, spring on a meadow beneath Kalaja e Tomorit, 26.05.2004 (2004/11), N40°42.409' E20°06.832', 1165m; singled, waternet.

10: Berat district, Tomor Mts, Çoban Spring in the upper valley of Karkanjos Stream, 26.05.2004 (2004/12), N40°42.897' E20°06.763', 1050m; singled, waternet.

11: Berat district, Tomor Mts, karst spring in the upper valley of Vodicë Stream, 26.05.2004 (2004/13), N40°43.231' E20°06.863', 1030m; singled, beaten, waternet, soil sample (springside moss).

12: Berat district, Tomor Mts, Karkanjos, macchia and grassland above the village, 27.05.2004 (2004/14), N40°41.483' E20°04.144', 570m; singled.

13: Berat district, Tomor Mts, Bogdan, macchia above the village, 27.05.2004 (2004/15), N40°41.849' E20°03.135', 380m; singled.

14: Berat district, Tomor Mts, Bogdan, macchia along the road towards Vodicë, 27.05.2004 (2004/16), N40°41.721' E20°02.860', 300m; singled.

15: Berat district, Tomor Mts, Vodicë, Vodicë Stream and its shore vegetation above the village, 27.05.2004 (2004/17), N40°40.949' E20°01.780', 105m; singled, beaten, waternet, plancton sample (temporary puddle close to the stream).

16: Berat district, Berat, Kalaja e Beratit, castle walls, 27.05.2004 (2004/18), N40°42.377' E19°56.785', 205m; singled.

17: Berat district, Berat, city centre, 27.05.2004 (2004/19), N40°42.319' E19°57.133', 65m; singled.

18: Berat district, Berat, Osum River and its gallery, 28.05.2004 (2004/20), N40°42.231' E19°56.934', 60m; singled, beaten, waternet.

19: Berat district, Tomor Mts, Tomor i Madhë, limestone rocks above the village, 26.05.2004 (2004/21), N40°40.733' E20°06.633', 970m; singled.

20: Berat district, Tomor Mts, limestone rocks close to the ridge towards Mt. Çuka Partizan, 26.05.2004 (2004/12), N40°41.329' E20°08.761', 2090m; singled.

21: Berat district, Tomor Mts, Tomor i Madhë, macchia SW of the village, 25.05.2004 (2004/23), N40°40.891' E20°05.297', 495m; singled.

22: Kurbin district, shallow pond along the Krujë–Mamurras road, 28.05.2004 (2004/24), N41°32.19' E19°42.77', 15m; singled.

08–14.08.2004 (leg. Zoltán Barina, Zoltán Fehér, Csaba Németh, Dániel Pifkó)

23: Skrapar district, Tomor Mts, Radesh, limestone rocks in the left side of a gorge NE of the village, 08.08.2004 (2004/75), N40°33.213' E20°16.699', 830m; singled.

24: Skrapar district, Tomor Mts, Radesh, limestone rocks in the right side of a gorge NE of the village, 08.08.2004 (2004/76), N40°33.232' E20°16.289', 1180m; singled.

25: Skrapar district, Tomor Mts, alpine meadow SE of Mt. Ramië, 08.08.2004 (2004/77), N40°33.614' E20°15.872', 1570m; singled.

26: Skrapar district, Tomor Mts, limestone rocks SE of Mt. Ramië, 08.08.2004 (2004/78), N40°33.878' E20°15.716', 1750m; singled.

27: Skrapar district, Tomor Mts, sink-hole S of Mt. Ramië, 09.08.2004 (2004/79), N40°34.114' E20°15.512', 1850m; singled.

28: Skrapar district, Tomor Mts, sink-hole E of Mt. Ramië, 09.08.2004 (2004/80), N40°34.652' E20°15.495', 2050m; singled.

29: Skrapar district, Tomor Mts, limestone rocks in the peak region of Mt. Kulmakë, 09.08.2004 (2004/81), N40°35.194' E20°14.629', 2180m; singled.

30: Skrapar district, Tomor Mts, limestone rocks N of Mt. Kulmakë, 09.08.2004 (2004/82), N40°35.377' E20°14.482', 2150m; singled.

31: Skrapar district, Tomor Mts, limestone rocks in a small gorge NW of Mt. Kulmakë, 09.08.2004 (2004/83), N40°35.477' E20°14.308', 2070m; singled.

32: Skrapar district, Tomor Mts, beech forest and limestone rocks NW of Mt. Kulmakë, 09.08.2004 (2004/84), N40°35.711' E20°13.283', 1610m; singled.

33: Skrapar district, Tomor Mts, meadow with small limestone rocks NW of Mt. Kulmakë, 09.08.2004 (2004/85), N40°35.909' E20°12.929', 1560m; singled.

34: Berat district, Tomor Mts, limestone rocks S of Mt. Tomor, 10.08.2004 (2004/86), N40°37.488' E20°10.452', 2100m; singled.

35: Berat district, Tomor Mts, limestone rocks in the peak region of Mt. Tomor, 10.08.2004 (2004/87), N40°37.838' E20°09.971', 2270m; singled.

36: Berat district, Tomor Mts, limestone rocks along the ridge N of Mt. Tomor, 10.08.2004 (2004/88), N40°38.494' E20°09.558', 2375m; singled.

37: Berat district, Tomor Mts, alpine meadow under limestone rocks, along the ridge N of Mt. Tomor, 10.08.2004 (2004/89), N40°38.641' E20°09.541', 2230m; singled.

38: Berat district, Tomor Mts, limestone rocks along the ridge N of Mt. Tomor, 10.08.2004 (2004/90), N40°39.094' E20°09.437', 2250m; singled.

39: Berat district, Tomor Mts, pine forest and limestone rocks below the E side of the ridge N of Mt. Tomor, 10.08.2004 (2004/91), N40°39.200' E20°09.670', 2050m; singled.

40: Berat district, Tomor Mts, limestone rocks below the W side of the ridge N of Mt. Tomor, 10.08.2004 (2004/92), N40°40.470' E20°09.464', 2060m; singled

41: Berat district, Tomor Mts, limestone rocks along the ridge N of Mt. Tomor, 10.08.2004 (2004/93), N40°41.233' E20°09.040', 2240m; singled.

42: Berat district, Tomor Mts, limestone rocks below the W side of the ridge N of Mt. Tomor, 11.08.2004 (2004/94), N40°41.332' E20°08.767', 2090m; singled.

43: Berat district, Tomor Mts, alpine meadow under limestone rocks, along the ridge N of Mt. Tomor, 11.08.2004 (2004/95), N40°41.919' E20°08.698', 2320m; singled.

44: Berat district, Tomor Mts, Tomor i Madhë, beech forest towards the ridge, above the village, 11.08.2004 (2004/96), N40°41.278' E20°08.392', 1780m; singled.

45: Berat district, Tomor Mts, Tomor i Madhë, beech forest towards the ridge, above the village, 11.08.2004 (2004/97), N40°41.299' E20°08.046', 1520m; singled

46: Berat district, Tomor Mts, Tomor i Madhë, limestone rocks towards the ridge, above the village, 11.08.2004 (2004/98), N40°41.267' E20°07.724', 1400m; singled.

47: Berat district, Tomor Mts, Tomor i Madhë, spring along the path towards the ridge, S of the village, 11.08.2004 (2004/99), N40°40.681' E20°06.683', 1000m; singled.

48: Berat district, Tomor Mts, Tomor i Madhë, limestone rocks above the village, 11.08.2004 (2004/100), N40°40.730' E20°06.651', 975m; singled.

49: Vlorë district, Cikë Mts, limestone rocks on Mt. Gurrë, 12.08.2004 (2004/101), N40°12.950' E19°36.380', 2010m; singled.

50: Vlorë district, Cikë Mts, alpine meadow under limestone rocks on the W side of Mt. Gurrë, 12.08.2004 (2004/102), N40°12.830' E19°36.659', 1850m; singled.

51: Vlorë district, Cikë Mts, alpine meadow along the ridge towards Mt. Cikë, 12.08.2004 (2004/103), N40°12.580' E19°37.072', 1840m; singled.

52: Vlorë district, Cikë Mts, limestone rocks and macchia N of Llogara Pass, 13.08.2004 (2004/104), N40°11.911' E19°35.498', 1040m; singled.

53: Shkodër district, Shkodër, Kalaja e Rozafat, limestone rocks on the N side of the castle hill, 14.08.2004 (2004/105), N42°02.836' E19°29.488', 15m; singled.

08–13.10.2004 (leg. Zoltán Fehér, Jenő Kotschán, Dávid Murányi)

54: Mat district, Ulëz, gorge of Mat River along the Burrel–Milot main road, 08.10.2004 (2004/107), N41°41.316' E19°49.572', 100m; singled, beaten.

55: Mat district, Shkanderbeu Mts, forest stream E of Shtamë Pass, along the Burrel–Krujë road, 08.10.2004 (2004/108), N41°32.346' E19°54.042', 970m; singled, beaten, waternet, soil sample (moss).

56: Krujë district, Shkanderbeu Mts, small spring SE of Shtamë Pass, along the Burrel–Krujë road, 08.10.2004 (2004/109), N41°30.234' E19°55.186', 1100m; singled, beaten.

57: Krujë district, Shkanderbeu Mts, forest torrent SE of Shtamë Pass, along the Burrel–Krujë road, 08.10.2004 (2004/110), N41°30.284' E19°55.334', 1150m; singled, beaten, waternet, soil sample (soil)

58: Mat district, Shkanderbeu Mts, beech forest on Shtamë Pass, 08.10.2004 (2004/111), N41°31.129' E19°53.521', 1250m; singled, beaten, soil samples (soil, beech litter).

59: Lezhë district, Lezhë, in the city, 09.10.2004 (2004/112), N41°46.489' E19°38.408', 10m; singled.

60: Mat district, Fshat, Mat River and its gallery at Vashë Bridge, 09.10.2004 (2004/113), N41°28.033' E20°06.168', 350 m; singled, beaten, waternet, soil samples (moss, rivershore moss).

61: Mat district, Fshat, sidespring of Mat River at Vashë bridge, 09.10.2004 (2004/113A), N41°28.033' E20°06.168', 350m; singled, beaten, waternet.

62: Mat district, Gropë Mts, Gurri i Bardhë, limestone rocks along the Klos–Elbasan road, NE of the village, 09.10.2004 (2004/114), N41°28.057' E20°05.252', 650m; singled, sweeping net.

63: Mat district, Gropë Mts, Gurri i Bardhë, grassland and limestone rocks along the Klos–Elbasan road, N of the village, 09.10.2004 (2004/115), N41°28.150' E20°04.402', 740m; singled, sweeping net.

64: Mat district, Gropë Mts, Gurri i Bardhë, Zoig-jevë Stream along the Klos–Elbasan road, S of the village, 09.10.2004 (2004/116), N41°26.110' E20°04.322', 925m; singled, beaten, waternet.

65: Mat district, Gropë Mts, Gurri i Bardhë, forest spring along the Klos–Elbasan road, S of the village, 09.10.2004 (2004/117), N41°26.064' E20°04.589', 965m; singled, waternet.

66: Mat district, Gropë Mts, Gurri i Bardhë, beech forest and forest brook along the Klos–Elbasan road, S of the village, 09.10.2004 (2004/118), N41°23.232' E20°04.544', 1365m; singled, beaten, soil sample (beech litter).

67: Mat district, Gropë Mts, shallow pond and stream on a meadow N of Shtyllë Pass, along the Klos–Elbasan road, 09.10.2004 (2004/119), N41°22.340' E20°05.084', 1475m; singled, beaten, waternet, sweeping net, plancton sample (shallow pond).

68: Tiranë district, Gropë Mts, limestone rocks and forest brook S of Shtyllë Pass, along the Klos–Elbasan road, 09.10.2004 (2004/120), N41°22.158' E20°05.079', 1500m; singled, beaten, soil samples (soil, litter, moss).

69: Tiranë district, Gropë Mts, Shëngjergj, grassland and limestone rocks along the Klos–Elbasan road, NE of the village, 09.10.2004 (2004/121), N41°21.053' E20°06.586', 1380m; singled.

70: Tiranë district, Gropë Mts, Shëngjergj, beech forest along the Klos–Elbasan road, S of the village, 09.10.2004 (2004/122), N41°18.200' E20°08.074', 1425m; singled, soil sample (beech litter).

71: Berat district, Tomor Mts, Vodice, dry grassland in the valley of Vodice Stream, above the village, 10.10.2004 (2004/123), N40°41.396' E20°02.144', 135m; singled, sweeping net.

72: Skrapar district, Tomor Mts, Çorovodë, bank of Çorovodë Stream at the Turkish bridge, above the city, 10.10.2004 (2004/124), N40°30.576' E20°14.335', 325m; singled.

73: Skrapar district, Tomor Mts, Çorovodë, dry forest and limestone walls above the gorge of Çorovodë Stream, NE of the city, 10.10.2004 (2004/125), N40°31.246' E20°15.112', 475m; singled.

74: Skrapar district, Tomor Mts, Çorovodë, macchia and limestone rocks above the gorge of Osum River, SE of the city, 10.10.2004 (2004/126), N40°28.467' E20°15.016', 400m; singled, soil sample (moss).

75: Skrapar district, Tomor Mts, Çorovodë, gallery of Osum River, NW of the city, 10.10.2004 (2004/127), N40°31.414' E20°10.069', 240m; singled.

76: Mallakastër district, Greshicë, Pavli Stream and the nearby limestone rocks S of the village, 11.10.2004 (2004/128), N40°32.082' E19°47.470', 120m; singled, beaten, waternet.

77: Berat district, Berat, city street, 10.10.2004 (2004/129), N40°42.217' E19°57.231', 65m; singled.

78: Tepelenë district, Kendrevicë Mts, Bencë, limestone rocks SW of the village, 11.10.2004 (2004/130), N40°14.570' E19°59.383', 270m; singled, beaten.

79: Tepelenë district, Kendrevicë Mts, Lekdush, dry grassland N of the village, 11.10.2004 (2004/131), N40°14.268' E19°57.415', 900m; singled, sweeping net.

80: Tepelenë district, Kendrevicë Mts, Progonat, Gurri Stream and its gorge E of the village, 11.10.2004 (2004/132), N40°12.368' E19°57.411', 950m; singled, beaten, waternet, soil samples (soil, moss).

81: Tepelenë district, Kendrevicë Mts, Progonat, brook and grassland W of the village, 11.10.2004 (2004/133), N40°12.486' E19°56.075', 785m; singled, beaten, waternet.

82: Tepelenë district, Kendrevicë Mts, Progonat, stream, spring and limestone rocks W of the village, 11.10.2004 (2004/134), N40°12.467' E19°55.499', 740m; singled, beaten, waternet.

83: Tepelenë district, Kendrevicë Mts, Progonat, cave W of the village, 11.10.2004 (2004/134B), N40°12.47' E19°55.50', 800m; singled, soil sample (guano of bats).

84: Tepelenë district, Kendrevicë Mts, Bencë, limestone rocks at the turkish aqueduct, NE of the village, 11.10.2004 (2004/135), N40°15.485' E20°00.255', 220m; singled.

85: Tepelenë district, Kendrevicë Mts, Bencë, Bencë River and its gallery at the turkish aqueduct, NE of the village, 11.10.2004 (2004/135A), N40°15.485' E20°00.255', 160m; singled, beaten, waternet.

86: Tepelenë district, Kendrevicë Mts, Tepelenë, limestone rocks and aqueduct above Bencë River, 12.10.2004 (2004/136), N40°17.377' E20°00.315', 160m; singled, beaten, soil samples (litter, moss).

87: Tepelenë district, Tepelenë, Uji i Ftohtë, karst springs, limestone rocks and degraded forest, 12.10.2004 (2004/137), N40°15.011' E20°03.548', 165m; singled, beaten, waternet, soil sample (soil).

88: Tepelenë district, Tepelenë, Uji i Ftohtë, Drinos River and its gallery, 12.10.2004 (2004/137A), N40°15.007' E20°03.550', 150m; beaten.

89: Gjirokastër district, Lunxherisë Mts, Suhë, limestone rocks NE of the village, 12.10.2004 (2004/138), N40°05.178' E20°16.180', 425m; singled.

90: Gjirokastër district, Lunxherisë Mts, Suhë, Suhë River NE of the village, 12.10.2004 (2004/139), N40°05.293' E20°17.319', 415m; singled, beaten, waternet.

91: Gjirokastër district, Lunxherisë Mts, Poliçan, sidetorrent of Suhë River SW of the village, 12.10.2004 (2004/140), N40°06.591' E20°19.459', 490m; singled, beaten.

92: Gjirokastër district, Nemerçkë Mts, Sheper, limestone gorge of Pogoni Stream at the village, 12.10.2004 (2004/141), N40°10.124' E20°18.544', 800m; singled.

93: Gjirokaštër district, Nemerçkë Mts, grassland and limestone rocks on Dhëmbel Pass, 12.10.2004 (2004/142), N40°11.081' E20°19.565', 1270m; singled.

94: Gjirokaštër district, Nemerçkë Mts, Sheper, shallow lake S of the village, 12.10.2004 (2004/143), N40°09.370' E20°18.528', 880m; plancton sample (shallow lake).

95: Gjirokaštër district, Gjirokaštër, Kalaje e Gjirokaštërit, castle walls, 13.10.2004 (2004/144), N40°04.280' E20°08.263', 330m; singled, soil sample (moss).

96: Delvinë district, Gjerë Mts, Muzinë, Syri i Kaltër, karst springs W of the village, 13.10.2004 (2004/145), N39°55.286' E20°11.330', 155m; singled, beaten, waternet, soil sample (moss from tree), plancton samples (strong karst spring, and muddy spring with dense vegetation).

97: Delvinë district, Gjerë Mts, Muzinë, Syri i Kaltër, lake beneath the springs, W of the village, 13.10.2004 (2004/145B), N39°55.091' E20°11.057', 150m; singled, waternet, plancton sample (artificial reservoir).

98: Sarandë district, Çikë Mts, Borsh, Ixuar Spring in the village, 13.10.2004 (2004/146), N40°03.686' E19°51.462', 105m; singled, beaten, waternet.

99: Vlorë district, Qeparo, seaside springs and seashore N of the village, 13.10.2004 (2004/147), N40°03.134' E19°48.756', 5m; singled, waternet, plancton sample (seaside spring outlet).

100: Vlorë district, Dhërmi, Dhërmi Stream in the village, 13.10.2004 (2004/148), N40°09.330' E19°38.374', 140m; singled.

01–05.05.2005 (leg. Zoltán Barina, Gergely Király, Dániel Pifkó)

101: Tepelenë district, Tepelenë, floodplain of Vjosë River SE of the city, 01.05.2005 (1), N40°17.476' E20°01.460', 125m; singled.

102: Tepelenë district, Kendrevicë Mts, Bencë, limestone rocks on the slope of Mt. Tresenik, towards Belikjot, 02.05.2005 (2), N40°15.995' E20°00.358', 235m; singled.

103: Tepelenë district, Kendrevicë Mts, Bencë, limestone rocks on the slope of Mt. Dutihë, NW of the village, 02.05.2005 (3), N40°15.721' E19°58.855', 1220m; singled.

104: Tepelenë district, Kendrevicë Mts, Bencë, limestone rocks on the slope of Mt. Dutihë, NW of the village, 02.05.2005 (4), N40°15.831' E19°58.224', 1225m; singled.

105: Tepelenë district, Kendrevicë Mts, Bencë, limestone rocks on the slope of Mt. Dutihë, NW of the village, 03.05.2005 (5), N40°15.896' E19°57.541', 1330m; singled.

106: Tepelenë district, Kendrevicë Mts, limestone rocks on the slope of Mt. Tushnicë, 03.05.2005 (6), N40°16.244' E19°55.570', 1150m; singled.

107: Tepelenë district, Kendrevicë Mts, spring section of Bencë River in a limestone gorge, beneath Kresha Pass, 03.05.2005 (7), N40°16.561' E19°54.078', 885m; singled.

108: Tepelenë district, Kendrevicë Mts, limestone rocks on the E slope of the peak of Mt. Klozjurë, 04.05.2005 (8), N40°16.693' E19°52.408', 1780m; singled.

109: Tepelenë district, Kendrevicë Mts, limestone rocks in the peak region of Mt. Kendrevicë, 04.05.2005 (9), N40°17.058' E19°51.400', 2005m; singled.

110: Tepelenë district, Kendrevicë Mts, limestone rocks in the peak region of Mt. Kendrevicë, 04.05.2005 (10A), N40°17.224' E19°51.168', 2085m; singled.

111: Tepelenë district, Kendrevicë Mts, limestone rocks in the peak region of Mt. Kendrevicë, 04.05.2005 (10B), N40°17.219' E19°51.684', 2005m; singled.

112: Tepelenë district, Kendrevicë Mts, Hoxhaj, bush on the slope of Mt. Komtiri, W of the village, 05.05.2005 (11), N40°18.919' E19°55.771', 775m; singled.

29.05–03.06.2005 (leg. Krisztina Balogh, Zoltán Barina, Dávid Murányi, Dániel Pifkó)

113: Shkodër district, Prokletije Mts, shallow alpine lake and limestone rocks on Terthorë Pass, 29.05.2005 (2005/1), N42°23.428' E19°43.580', 1690m; singled, plancton sample (shallow alpine lake).

114: Shkodër district, Prokletije Mts, Okol, karst spring and its outlet along the road towards Terthorë Pass, 29.05.2005 (2005/2), N42°23.168' E19°44.876', 1620m; singled, waternet.

115: Shkodër district, Prokletije Mts, Okol, beech forest along the road towards Terthorë Pass, 29.05.2005 (2005/3), N42°23.154' E19°45.534', 1550m; singled.

116: Shkodër district, Prokletije Mts, Okol, stream along the path towards Pejë Pass, 30.05.2005 (2005/4), N42°24.496' E19°45.271', 1010m; singled, beaten, waternet.

117: Shkodër district, Prokletije Mts, Okol, brook along the path towards Pejë Pass, 30.05.2005 (2005/5), N42°24.510' E19°45.300', 1000m; singled, beaten, waternet.

118: Shkodër district, Prokletije Mts, Okol, karst spring and beech forest N of the village, towards Pejë Pass, 30.05.2005 (2005/6), N42°25.664' E19°45.704', 990m; singled, beaten, waternet, soil sample (beech litter and soil).

119: Shkodër district, Prokletije Mts, alpine grassland and limestone rocks on Pejë Pass, 31.05.2005 (2005/7), N42°26.650' E19°46.228', 1720m; singled, soil sample (soil and moss from rocks at a small, seasonal spring).

120: Shkodër district, Prokletije Mts, alpine grassland and limestone rocks on the slope of Mt. Harapë, 31.05.2005 (2005/8), N42°26.588' E19°45.824', 1800m; singled.

121: Shkodër district, Prokletije Mts, Okol, karst spring system N of the village, 01.06.2005 (2005/9), N42°25.347' E19°45.680', 885m; singled, beaten, waternet.

122: Shkodër district, Prokletije Mts, Okol, stream along the path towards Valbonë Pass, 01.06.2005 (2005/10), N42°24.255' E19°46.483', 895m; singled, waternet.

123: Shkodër district, Prokletije Mts, Okol, stream beneath Valbonë Pass, 01.06.2005 (2005/11), N42°24.385' E19°47.917', 1430m; singled, beaten, waternet.

124: Tropojë district, Prokletije Mts, Rrogam, limestone rocks and alpine grassland beneath Valbonë Pass, 02.06.2005 (2005/12), N42°24.679' E19°48.784', 1650m; singled, soil sample (soil and moss near a small, snow melt watercourse).

125: Tropojë district, Prokletije Mts, Rrogam, spring system of Valbonë River and beech forest above the village, 02.06.2005 (2005/13), N42°24.620' E19°49.366', 1455m; singled, beaten, waternet, soil samples (litter, soil and moss from the bank of an outlet, beech litter).

126: Tropojë district, Prokletije Mts, Rrogam, Valbonë River above the village, 02.06.2005 (2005/14), N42°24.551' E19°49.935', 1120m; singled, beaten, waternet.

127: Shkodër district, Prokletije Mts, Okol, forest spring and its outlet beneath Valbonë Pass, 02.06.2005 (2005/15), N42°24.384' E19°47.916', 1500m; singled.

128: Shkodër district, Prokletije Mts, Okol, beech forest along the path towards Valbonë Pass, 03.06.2005 (2005/16), N42°24.374' E19°48.461', 1070m; singled, soil sample (beech litter).

129: Shkodër district, Prokletije Mts, Theth, Shalë River in the village, 03.06.2005 (2005/17), N42°23.695' E19°46.265', 750m; singled, beaten, waternet.

130: Shkodër district, Prokletije Mts, Okol, stream with a waterfall along the road to Theth, 03.06.2005 (2005/18), N42°24.137' E19°45.791', 900m; singled, waternet.

03–07.07.2005 (leg. Zoltán Barina, Dániel Pifkó, Dávid Schmidt)

131: Skrapar district, Polena, cultivated pine forest on the N edge of the village, 03.07.2005 (8327), N40°29.542' E20°16.672', 825m; singled.

132: Skrapar district, Ostrovicë Mts, Backë, limestone rocks on the slope of Frengu Peak, NE of the village, 04.07.2005 (8374), N40°31.197' E20°25.063', 1580m; singled.

133: Skrapar district, Ostrovicë Mts, Backë, limestone rocks on the slope of Frengu Peak, NE of the village, 04.07.2005 (8394), N40°31.364' E20°24.817', 1765m; singled.

134: Skrapar district, Ostrovicë Mts, Backë, limestone rocks and open brook on the E slope of Frengu Peak, NE of the village, 04.07.2005 (8415), N40°31.561' E20°24.917', 1900m; singled.

135: Skrapar district, Ostrovicë Mts, Backë, open stream beneath the pass between Frengu and Faqekuq Peaks, N of the village, 04.07.2005 (001), N40°31.614' E20°25.021', 1915m; singled.

136: Skrapar district, Ostrovicë Mts, Backë, spring section of Mrbret Stream beneath Faqekuq Peak, N of the village, 05.07.2005 (8457), N40°31.752' E20°25.153', 1970m; singled.

137: Skrapar district, Ostrovicë Mts, Backë, limestone rocks in the peak region of Faqekuq Peak, N of the village, 05.07.2005 (8483), N40°31.951' E20°25.458', 2310m; singled.

138: Skrapar district, Ostrovicë Mts, Çeramica, open brook W of the village, 05.07.2005 (003), N40°32.649' E20°26.573', 1820m; singled.

139: Skrapar district, Ostrovicë Mts, Çeramica, sandy soil W of the village, 06.07.2005 (8535), N40°32.480' E20°26.797', 1735m; singled.

140: Skrapar district, Ostrovicë Mts, Çeramica, Janorec Brook W of the village, 06.07.2005 (8585), N40°32.507' E20°27.708', 1450m; singled.

141: Skrapar district, Ostrovicë Mts, Çeramica, open stream W of the village, 06.07.2005 (8588), N40°32.780' E20°27.527', 1535m; singled.

142: Skrapar district, Ostrovicë Mts, grassland above Vesci Pass, 06.07.2005 (004), N40°34.012' E20°26.666', 2060m; singled.

143: Skrapar district, Ostrovicë Mts, open brook beneath Mt. Ostrovicë, 06.07.2005 (260), N40°34.051' E20°26.846', 1960m; singled.

144: Skrapar district, Ostrovicë Mts, limestone rocks on the SW ridge of Mt. Ostrovicë, 07.07.2005 (005), N40°34.589' E20°26.840', 2260m; singled.

145: Skrapar district, Ostrovicë Mts, open spring beneath Mt. Ostrovicë, NW of Faqekuq Peak, 07.07.2005 (006), N40°33.485' E20°25.074', 1715m; singled

146: Skrapar district, Ostrovicë Mts, entrance of the limestone gorge of Krishovë Stream, N of Faqekuq Peak, 07.07.2005 (8676), N40°33.639' E20°23.626', 1070m; singled.

**04–11.10.2005 (leg. Tamás Deli, Zoltán Eröss,
Zoltán Fehér, Dávid Murányi)**

147: Malësi e Madhe district, Madhë Mts, Gërçarë border station, house walls, 04.10.2005 (2005/45), N42°35.014' E19°46.487', 950m; singled.

148: Malësi e Madhe district, Madhë Mts, Vermosh, Vermosh (Lim) River and its littoral bush E of the village, 04.10.2005 (2005/46), N42°34.999' E19°44.241', 1010m; singled, beaten, waternet.

149: Malësi e Madhe district, Madhë Mts, Vermosh, limestone rocks, Lepushë Stream and its gallery along the Gusinje-Shkodër road, 04.10.2005 (2005/47), N42°34.325' E19°44.395', 1080m; singled, beaten, waternet, soil sample (beech litter).

150: Malësi e Madhe district, Madhë Mts, Gropa e Sëlces, karst cave sidespring of the Cem River and its littoral vegetation, S of the village, 04.10.2005 (2005/48), N42°31.937' E19°39.052', 900m; singled, beaten, waternet, sweeping net.

151: Malësi e Madhe district, Madhë Mts, Lepushë, limestone rocks and beech forest beneath Mt. Peron-disë, SE of the village, 04.10.2005 (2005/49), N42°30.938' E19°44.228', 1410m; singled.

152: Malësi e Madhe district, Madhë Mts, Lepushë, degraded pasture in the village, 04.10.2005 (2005/49A), N42°31.705' E19°43.660', 1280m; singled.

153: Malësi e Madhe district, Madhë Mts, Vermosh, beech and alder forest along the sidestream of Vermosh (Lim) River in the village, 04.10.2005 (2005/50), N42°35.460' E19°40.746', 1075m; singled, soil sample (beech and alder litter).

154: Tropojë district, Qafa e Morinës border station, house walls, 05.10.2005 (2005/56), N42°24.848' E20°13.850', 565m; singled.

155: Tropojë district, Prokletije Mts, Bajram Curri, Hotel Turizm, in and around the hotel, 06.10.2005 (2005/57), N42°21.345' E20°04.394', 360m; singled.

156: Tropojë district, Prokletije Mts, Shoshan, limestone gorge of Valbonë River close to the village, 06.10.2005 (2005/58), N42°23.305' E20°04.374', 280m; singled.

157: Tropojë district, Prokletije Mts, Dragobi, limestone rocks SE of the village, 06.10.2005 (2005/59), N42°24.983' E20°00.763', 445m; singled.

158: Tropojë district, Prokletije Mts, Dragobi, Thatë Stream and its gorge in the village, 06.10.2005

(2005/60), N42°26.184' E19°59.079', 540m; singled, beaten, waternet.

159: Tropojë district, Prokletije Mts, Rrogam, spring system of Valbonë River, above the village, 06.10.2005 (2005/61), N42°24.620' E19°49.366', 1455m; singled, beaten, waternet, soil sample (beech litter).

160: Tropojë district, Prokletije Mts, Rrogam, limestone rocks, cave and alpine grassland beneath Valbonë Pass, 06.10.2005 (2005/62), N42°24.681' E19°48.885', 1560m; singled, sweeping net, soil sample (cave soil), sweeping net sample (alpine grassland).

161: Tropojë district, Prokletije Mts, limestone walls over the N side of Valbonë Pass, 06.10.2005 (2005/63), N42°24.407' E19°48.732', 1850m; singled, soil sample (soil and grass roots under rocks).

162: Tropojë district, Prokletije Mts, limestone rocks E of Valbonë Pass, 06.10.2005 (2005/63B), N42°24.495' E19°48.819', 1760m; singled.

163: Tropojë district, Prokletije Mts, Rrogam, pasture in the garden of Lulasë family, 06.10.2005 (2005/64), N42°24.610' E19°50.392', 1105m; singled.

164: Tropojë district, Lëkurtaj, Valbonë River and Shijë Stream at their confluence, littoral vegetation and limestone rock, S of the village, 07.10.2005 (2005/65), N42°17.927' E20°01.731', 220m; singled, beaten, waternet.

165: Tropojë district, Gurorë, limestone walls and secondary hornbeam bush above the village, 07.10.2005 (2005/66), N42°17.206' E20°01.287', 290m; singled

166: Tropojë district, Fierzë, limestone walls above Koman Lake, W of the city, 07.10.2005 (2005/67), N42°15.784' E19°59.400', 225m; singled.

167: Tropojë district, Fierzë, brook and limestone rocks above Koman Lake, W of the city, 07.10.2005 (2005/68), N42°16.068' E19°56.966', 290m; singled, waternet.

168: Tropojë district, Lekbibaj, secondary hornbeam forest at the Vodafone tower, SW of the village, 07.10.2005 (2005/69), N42°16.536' E19°54.285', 900m; singled.

169: Pukë district, Miliskë, limestone rocks N of the village, 07.10.2005 (2005/70), N42°13.215' E20°05.859', 565m; singled.

170: Pukë district, Dardhë, Hotel Kunora, on house walls, 07.10.2005 (2005/71), N42°10.549' E20°09.458', 750m; singled.

171: Pukë district, Mali Pass, roadside vegetation along the Shkodër–Kukës road, 08.10.2005 (2005/72), N42°06.033' E20°08.627', 940m; singled.

172: Kukës district, Pezë Mts, Arrën, brook in hornbeam bush N of the village, 08.10.2005 (2005/73),

N41°59.701' E20°18.154', 890m; singled, beaten, waternet.

173: Kukës district, Pezë Mts, Arrën, karst plateau with secondary beech forest, N of the village, 08.10.2005 (2005/74), N41°56.833' E20°16.773', 1320m; singled, soil sample (beech litter).

174: Kukës district, Pezë Mts, Arrën, limestone rocks with secondary hornbeam forest at the village, 08.10.2005 (2005/75), N41°55.450' E20°16.878', 1150m; singled, soil sample (empty bird nest).

175: Kukës district, Pezë Mts, Arrën, Gurri i Arrënit (Mt. Zepa), limestone rocks and devastated beech forest karst E of the village, 08.10.2005 (2005/76), N41°54.978' E20°15.156', 1600m; singled.

176: Kukës district, Pezë Mts, Arrën, Gurri i Shkallës, limestone rocks E of the village, 08.10.2005 (2005/77), N41°55.129' E20°16.157', 1300m; singled.

177: Kukës district, Kukës, petrol station in the city, 09.10.2005 (2005/78), N42°04.875' E20°25.272', 360m; singled.

178: Kukës district, Kolesjan, limestone rocks S of the village, 09.10.2005 (2005/79), N41°57.597' E20°23.689', 670m; singled.

179: Kukës district, Resk, limestone rocks S of the village, 09.10.2005 (2005/80), N41°56.999' E20°22.842', 675m; singled.

180: Kukës district, Resk, small stream N of the mouth of Bushtricë Stream, S of the village, 09.10.2005 (2005/81), N41°56.428' E20°22.561', 420m; singled, beaten, waternet.

181: Kukës district, Skavicë, Drin i Zi River and Bushtricë Stream at their confluence, limestone rocks at the village, 09.10.2005 (2005/82), N41°56.109' E20°21.792', 305m; singled, beaten, waternet.

182: Kukës district, Skavicë, limestone rocks at the bridge of Drin i Zi River, S of the village, 09.10.2005 (2005/83), N41°55.423' E20°21.237', 320m; singled.

183: Kukës district, Tej-Drinit, limestone rocks and hornbeam bush at the village, 09.10.2005 (2005/84), N41°56.539' E20°21.560', 620m; singled.

184: Kukës district, Skavicë, limestone rocks E of the village, 09.10.2005 (2005/85), N41°54.488' E20°21.495', 620m; singled.

185: Dibër district, Draj-Reç, limestone rocks and pasture N of the village, 09.10.2005 (2005/86), N41°53.447' E20°20.220', 550m; singled, sweeping net, sweeping net sample (pasture).

186: Dibër district, Draj-Reç, Drin i Zi River at the bridge towards Zall-Reç, S of the village, 09.10.2005 (2005/87), N41°53.282' E20°18.991', 310m; singled, beaten, waternet.

187: Dibër district, Zall-Reç, limestone rocks S of the village, 09.10.2005 (2005/88), N41°51.010' E20°19.769', 510m; singled.

188: Dibër district, Arras, limestone rocks above the village, 10.10.2005 (2005/89), N41°44.345' E20°17.809', 465m; singled.

189: Dibër district, Lurë area, Cidhnë, limestone rocks at the entrance of the gorge of Setë Stream, W of the village, 10.10.2005 (2005/90), N41°45.111' E20°15.665', 680m; singled.

190: Dibër district, Lurë area, Cidhnë, aqueduct and limestone walls above Setë Stream in its gorge, W of the village, 10.10.2005 (2005/90A), N41°45.149' E20°14.732', 780m; singled, beaten, waternet.

191: Dibër district, Lurë area, Cidhnë, Setë Stream and limestone walls in its gorge, 10.10.2005 (2005/90B), N41°45.036' E20°15.754', 510m; singled.

192: Dibër district, Lurë area, Cidhnë, limestone rocks N of the village, 10.10.2005 (2005/91), N41°47.133' E20°17.221', 1085m; singled.

193: Dibër district, Lurë area, Cidhnë, limestone rocks N of the village, 10.10.2005 (2005/92), N41°47.964' E20°16.837', 1230m; singled.

194: Dibër district, Lurë area, karst forest, limestone rocks and dry grassland along the Cidhnë-Fushë Lurë road, 10.10.2005 (2005/93), N41°48.892' E20°16.650', 1345m; singled, sweeping net, soil sample (beech litter from rocks), sweeping net sample (dry grassland).

195: Dibër district, Dejë Mts, Lunarë, limestone rocks, Murrë River and its sidespring at the bridge, 11.10.2005 (2005/94), N41°37.542' E20°14.993', 730m; singled, beaten.

196: Mat district, Dejë Mts, limestone rocks W of Shkanderbeu Cliff, N of Murrë Pass, 11.10.2005 (2005/95), N41°38.763' E20°10.832', 1160m; singled.

197: Mat district, Dejë Mts, Varoshit Stream and its karst cave sidespring at Shkanderbeu Cliff, N of Murrë Pass, 11.10.2005 (2005/96), N41°38.792' E20°11.390', 975m; singled, beaten, waternet, soil sample (litter from dead tree trunk), sweeping net sample (bush at a karst spring outlet).

198: Dibër district, Dejë Mts, Selishtë, limestone rocks above the village, 11.10.2005 (2005/97), N41°37.119' E20°17.372', 1000m; singled.

09–17.04.2006 (leg. Zoltán Eröss, Zoltán Fehér, András Hunyadi, Dávid Murányi)

199: Librazhd district, Qukës Shkumbin, Shkumbin River and its sidespring, 09.04.2006 (2006/4), N41°05.761' E20°26.566', 380m; singled, beaten, waternet.

200: Elbasan district, Shirgjan, limestone rocks and roadside vegetation at the village, 09.04.2006 (2006/5), N41°02.147' E20°04.117', 200m; singled.

- 201: Gramsh district, Tomor Mts, Tunjë, degraded oak forest S of the village, 09.04.2006 (2006/6), N40°47.488' E20°05.693', 900m; singled.
- 202: Gramsh district, Tomor Mts, Dardhë, open brook and limestone rocks beneath Mt. Çuka Partizan, 09.04.2006 (2006/7), N40°44.584' E20°07.628', 810m; singled, beaten, waternet, soil sample (soil beneath rocks).
- 203: Elbasan district, Çermenikë Mts, Griqan, limestone rocks in the village, 10.04.2006 (2006/8), N41°09.454' E20°07.480', 580m; singled.
- 204: Elbasan district, Çermenikë Mts, Gurri i Zi, limestone rocks along the Elbasan–Klos road, S of the village, 10.04.2006 (2006/9), N41°12.212' E20°06.875', 900m; singled, soil sample (soil and roots under rocks).
- 205: Elbasan district, Çermenikë Mts, Gurri i Zi, limestone rocks along the Elbasan–Klos road, N of the village, 10.04.2006 (2006/10), N41°12.763' E20°08.184', 1100m; singled.
- 206: Elbasan district, Çermenikë Mts, Gurri i Zi, limestone rocks along the Elbasan–Klos road, N of the village, 10.04.2006 (2006/11), N41°13.356' E20°07.605', 1150m; singled.
- 207: Elbasan district, Çermenikë Mts, Cerunjë, forest brook, spring and rocks along the Elbasan–Klos road, E of the village, 10.04.2006 (2006/12), N41°14.355' E20°06.570', 1150m; singled, beaten, waternet.
- 208: Elbasan district, Çermenikë Mts, Cerunjë, limestone rocks along the Elbasan–Klos road, E of the village, 10.04.2006 (2006/13), N41°14.332' E20°05.856', 1180m; singled.
- 209: Tiranë district, Gropë Mts, Vakumonë, karst spring, open brook, puddle and beech forest along the Elbasan–Klos road, SE of the village, 10.04.2006 (2006/14), N41°15.122' E20°05.791', 1200m; singled, beaten, waternet, soil sample (beech litter).
- 210: Tiranë district, Gropë Mts, Vakumonë, beech forest along the Elbasan–Klos road, E of the village, 10.04.2006 (2006/15), N41°16.165' E20°05.088', 1150m; singled, soil sample (beech litter and decaying wood).
- 211: Tiranë district, Gropë Mts, Vakumonë, limestone rocks, wet grassland and forest brook along the Elbasan–Klos road, NE of the village, 10.04.2006 (2006/16), N41°17.456' E20°04.992', 1230m; singled, waternet, sweeping net.
- 212: Tiranë district, Gropë Mts, Shëngjergj, spring and its outlet in beech forest along the Elbasan–Klos road, S of the village, 10.04.2006 (2006/17), N41°17.706' E20°06.051', 1230m; singled, waternet.
- 213: Tiranë district, Gropë Mts, Shëngjergj, limestone rocks along the Elbasan–Klos road, S of the village, 10.04.2006 (2006/18), N41°17.438' E20°07.133', 1300m; singled.
- 214: Tiranë district, Gropë Mts, Shëngjergj, beech forest along the Elbasan–Klos road, S of the village, 10.04.2006 (2006/19), N41°17.683' E20°07.333', 1350m; singled, soil sample (beech litter).
- 215: Librazhd district, Çermenikë Mts, Funarës, limestone rocks E of the village, 11.04.2006 (2006/20), N41°16.485' E20°16.076', 660m; singled, formol method.
- 216: Librazhd district, Çermenikë Mts, Floq, limestone rocks at the village, 11.04.2006 (2006/21), N41°15.960' E20°15.573', 690m; singled.
- 217: Librazhd district, Çermenikë Mts, Oranjë, limestone rocks at the village, 11.04.2006 (2006/22), N41°16.718' E20°12.723', 750m; singled.
- 218: Librazhd district, Çermenikë Mts, Floq, open stream E of the village, 11.04.2006 (2006/23), N41°15.986' E20°14.621', 620m; singled, waternet.
- 219: Librazhd district, Çermenikë Mts, Lunik, limestone rocks S of the village, 11.04.2006 (2006/24), N41°15.961' E20°19.092', 700m; singled.
- 220: Librazhd district, Çermenikë Mts, Lunik, limestone rocks E of the village, 11.04.2006 (2006/25), N41°16.606' E20°20.109', 750m; singled.
- 221: Librazhd district, Çermenikë Mts, Lunik, limestone rocks NE of the village, 11.04.2006 (2006/26), N41°17.812' E20°22.441', 1050m; singled.
- 222: Bulqizë district, Çermenikë Mts, Fushë Studen, beech forest and forest brook NE of the village, 11.04.2006 (2006/27), N41°19.423' E20°25.376', 1190m; singled, formol method, soil sample (beech litter).
- 223: Bulqizë district, Çermenikë Mts, Steblevë, limestone rocks S of the village, 11.04.2006 (2006/28), N41°19.517' E20°27.073', 1230m; singled.
- 224: Bulqizë district, Gollobordë Mts, Klenjë, cave and limestone rocks at the village, 11.04.2006 (2006/29), N41°21.890' E20°28.112', 1200m; singled.
- 225: Dibër district, Arras, limestone rocks above the village, 12.04.2006 (2006/30), N41°44.345' E20°17.809', 465m; singled.
- 226: Dibër district, Lurë area, Cidhnë, limestone walls above Setë Stream in its gorge, W of the village, 12.04.2006 (2006/31A), N41°45.123' E20°15.145', 710m; singled.
- 227: Dibër district, Lurë area, Cidhnë, limestone walls above Setë Stream in its gorge, W of the village, 12.04.2006 (2006/31B), N41°45.170' E20°15.029', 750m; singled.
- 228: Dibër district, Lurë area, Cidhnë, limestone walls above Setë Stream in its gorge, W of the village,

12.04.2006 (2006/31C), N41°45.149' E20°14.732', 780m; singled.

229: Dibër district, Lurë area, Cidhnë, Setë Stream and limestone rocks above the gorge, W of the village, 12.04.2006 (2006/32), N41°45.428' E20°14.333', 730m; singled, waternet, soil samples (moss and maple litter).

230: Dibër district, Lurë area, Cidhnë, spring above the gorge of Setë Stream, W of the village, 12.04.2006 (2006/32F), N41°45.370' E20°14.351', 730m; singled.

231: Dibër district, Trojak, open stream S of the village, 12.04.2006 (2006/33), N41°47.381' E20°23.491', 790m; singled, beaten, waternet.

232: Dibër district, Dejë Mts, Selishtë, marble quarry E of the village, 13.04.2006 (2006/34), N41°39.745' E20°19.037', 530m; singled.

233: Dibër district, Dejë Mts, Selishtë, limestone rocks above Murrë River, in the village, 13.04.2006 (2006/35), N41°37.550' E20°16.367', 810m; singled, soil sample (litter from a rock hole).

234: Dibër district, Dejë Mts, Lunarë, limestone rocks, Murrë River and its sidespring at the bridge, 13.04.2006 (2006/36), N41°37.542' E20°14.993', 730m; singled, beaten, waternet.

235: Mat district, Dejë Mts, Varoshit Stream and its karst cave sidespring at Shkanderbeu Cliff, N of Murrë Pass, 13.04.2006 (2006/37), N41°38.792' E20°11.390', 975m; singled, beaten, waternet.

236: Mat district, Dejë Mts, limestone rocks W of Shkanderbeu Cliff, N of Murrë Pass, 13.04.2006 (2006/38), N41°38.707' E20°10.939', 1090m; singled.

237: Mat district, Dejë Mts, limestone rocks W of Shkanderbeu Cliff, N of Murrë Pass, 13.04.2006 (2006/39), N41°38.763' E20°10.836', 1160m; singled.

238: Mat district, Dejë Mts, degraded forest and sidestream of Varoshit Stream along the road to Lurë area, 13.04.2006 (2006/40), N41°39.829' E20°11.730', 1210m; singled, beaten, waternet, soil sample (soil from beneath dead tree trunk).

239: Mat district, Dejë Mts, limestone rocks W of Shkanderbeu Cliff, N of Murrë Pass, 13.04.2006 (2006/41), N41°39.015' E20°11.164', 1180m; singled.

240: Mat district, Dejë Mts, Fikë, artificial pond and pasture NE of the village, 13.04.2006 (2006/42), N41°38.658' E20°09.558', 1120m; singled, plancton sample (artificial pond).

241: Mat district, Dejë Mts, Lis, limestone rocks E of the village, 13.04.2006 (2006/43), N41°38.110' E20°07.460', 860m; singled

242: Mat district, spring and brook in the gorge of Mat River along the Burrel–Milot main road, 14.04.2006 (2006/44), N41°40.684' E19°51.175', 90m; singled.

243: Mat district, limestone rocks in the gorge of Mat River along the Burrel–Milot main road, 14.04.2006 (2006/45), N41°41.505' E19°49.906', 90m; singled.

244: Shkodër district, Laç-Qyrsaç, brook and pine forest NE of the city, 14.04.2006 (2006/46), N42°01.013' E19°39.636', 115m; singled, beaten, waternet.

245: Shkodër district, Koman, limestone rocks at the ferry harbour of Koman Lake, 14.04.2006 (2006/47), N42°06.519' E19°49.584', 180m; singled.

246: Shkodër district, limestone rocks and right sidestream of Koman Lake, right bank 1.5km above the dam, 14.04.2006 (2006/48), N42°07.302' E19°49.882', 180m; singled, waternet.

247: Shkodër district, limestone rocks and rocky forest at Koman Lake, left bank 1.5km above the dam, 14.04.2006 (2006/49), N42°06.993' E19°50.243', 180m; singled.

248: Shkodër district, Karmë, macchia and limestone rocks at the village 14.04.2006 (2006/50), N42°04.856' E19°44.173', 90m; singled.

249: Shkodër district, Karmë, brook in bush and rocks E of the village 14.04.2006 (2006/51), N42°04.421' E19°47.350', 140m; singled, beaten, waternet.

250: Shkodër district, limestone rocks at Koman Lake, right bank 12km above the dam, 15.04.2006 (2006/52), N42°11.229' E19°52.173', 180m; singled.

251: Shkodër district, limestone rocks at Koman Lake, right bank 15km above the dam, 15.04.2006 (2006/53), N42°12.321' E19°53.507', 180m; singled.

252: Shkodër district, open brook on limestone rocks, and the shore of Koman Lake, right bank 15.5km above the dam, 15.04.2006 (2006/54), N42°12.640' E19°53.677', 180m; singled, waternet.

253: Shkodër district, brook and limestone rocks at Koman Lake, right bank 17.5km above the dam, 15.04.2006 (2006/55), N42°13.550' E19°53.542', 180m; singled, beaten, waternet.

254: Shkodër district, stream and its valley with limestone rocks at Koman Lake, left bank 18km above the dam, 15.04.2006 (2006/56), N42°13.613' E19°54.300', 180m; singled, beaten, waternet.

255: Shkodër district, Zuos, Bunë River and its gallery at the village, 15.04.2006 (2006/57), N42°01.634' E19°28.318', 5m; singled, beaten.

256: Shkodër district, Zogaj, macchia and limestone rocks at Shkodër Lake, E of the village, 15.04.2006 (2006/58), N42°04.148' E19°24.788', 30m; singled,

257: Shkodër district, Zogaj, macchia and limestone rocks at Shkodër Lake, W of the village, 15.04.2006 (2006/59), N42°04.342' E19°23.678', 30m; singled.

258: Shkodër district, Rrash, Vrak Spring and its outlet stream, limestone rocks and macchia at the

village, 16.04.2006 (2006/60), N42°08.817' E19°32.726', 50m; singled, beaten, waternet.

259: Shkodër district, Gruemirë, limestone quarry at the village, 16.04.2006 (2006/61), N42°09.138' E19°32.412', 90m; singled.

260: Shkodër district, Kurtaj, limestone rocks above the village, 16.04.2006 (2006/62), N42°11.380' E19°33.726', 330m; singled, plancton sample (lithelma on limestone rock).

261: Shkodër district, Prokletije Mts, Rioli, side-torrent of Sheu River and limestone rocks beneath the village, 16.04.2006 (2006/63), N42°12.267' E19°34.079', 270m; singled, beaten, waternet.

262: Shkodër district, Prokletije Mts, Rioli, Sheu River, pasture and limestone rocks beneath the village, 16.04.2006 (2006/64), N42°12.390' E19°34.139', 260m; singled, beaten, waternet.

263: Shkodër district, Prokletije Mts, Rioli, limestone rocks at Sheu River in the village, 16.04.2006 (2006/65), N42°12.688' E19°34.750', 370m; singled.

264: Shkodër district, Prokletije Mts, Rioli, horn-beam shrub SW of the village, 16.04.2006 (2006/66), N42°11.827' E19°33.783', 350m; singled.

265: Shkodër district, Mes, limestone rocks on the shore of Kir River at Mesi Bridge, 16.04.2006 (2006/67), N42°06.854' E19°34.562', 60m; singled.

266: Shkodër district, Prokletije Mts, Ukbibaj, limestone rocks E of the village, 16.04.2006 (2006/68), N42°07.076' E19°39.538', 570m; singled.

267: Shkodër district, Prokletije Mts, Ukbibaj, limestone rocks NE of the village, 16.04.2006 (2006/69), N42°07.543' E19°40.061', 710m; singled.

268: Shkodër district, Prokletije Mts, Shllak, limestone rocks W of the village, 16.04.2006 (2006/70), N42°07.844' E19°42.641', 1020m; singled.

269: Shkodër district, Prokletije Mts, Shllak, artificial pond and limestone rocks W of the village, 16.04.2006 (2006/70A), N42°07.626' E19°42.773', 1020m; singled, waternet, plancton sample (artificial pond).

270: Shkodër district, Shkodër, Hotel Kaduku, garden and house walls, 17.04.2006 (2006/71), N42°03.439' E19°30.095', 20m; singled.

271: Malësi e Madhe district, Polvar, shallow lake and ruderal grassland at the village, 17.04.2006 (2006/72), N42°11.916' E19°27.014', 60m; singled, waternet.

272: Malësi e Madhe district, Hani i Hotit, Shkodër Lake and its shore before the border station, 17.04.2006 (2006/73), N42°20.056' E19°25.641', 20m; singled, waternet.

10–12.05.2006 (leg. László Dányi, Jenő Kotschán, Dávid Murányi)

273: Malësi e Madhe district, Hani i Hotit, Shkodër Lake and macchia vegetation before the border station,

10.05.2006 (2006/82), N42°20.053' E19°25.617', 20m; singled, waternet.

274: Lezhë district, Kakarriq, channel along the Shkodër–Tiranë road, N of the village, 10.05.2006 (2006/83), N41°55.537' E19°35.007', 10m; singled, waternet.

275: Kurbin district, Mamuras, channel along the Shkodër–Tiranë road, S of the city, 10.05.2006 (2006/84), N41°32.148' E19°40.670', 20m; singled, waternet.

276: Vlorë district, Panaja, olive grove N of the village, 11.05.2006 (2006/85), N40°33.015' E19°28.238', 20m; singled, sweeping net.

277: Vlorë district, Radhimë, seashore beneath the village, 11.05.2006 (2006/86), N40°21.673' E19°28.832', 0m; singled, waternet, soil sample (seashore debrits).

278: Vlorë district, Orikum, mouth of a brackish channel N of the city, 11.05.2006 (2006/86B), N40°20.594' E19°28.917', 0m; singled, waternet.

279: Vlorë district, Çikë Mts, pine forest N of Llogara Pass, 11.05.2006 (2006/87), N40°12.717' E19°34.750', 860m; singled, beaten, soil sample (pine forest soil).

280: Vlorë district, Çikë Mts, spring and its outlet N of Llogara Pass, 11.05.2006 (2006/88), N40°12.187' E19°35.254', 980m; singled, beaten, waternet, soil sample (moss).

281: Vlorë district, Dhërmi, Dhërmi Stream in the village, 11.05.2006 (2006/89), N40°09.330' E19°38.374', 140m; singled, beaten.

282: Vlorë district, Dhërmi, macchia and rocky grassland S of the village, 11.05.2006 (2006/90), N40°08.607' E19°39.735', 250m; singled, soil sample (rocky grassland soil).

283: Vlorë district, Lias, oak forest, grassland and limestone rocks in Canion Gjipesë, S of the village, 11.05.2006 (2006/91), N40°08.622' E19°40.620', 255m; singled, beaten.

284: Vlorë district, Qeparo, seaside springs, rocky macchia and seashore N of the village, 11.05.2006 (2006/92), N40°03.134' E19°48.756', 5m; singled, waternet.

285: Sarandë district, Çikë Mts, Borsh, Ixur Spring in the village, 11.05.2006 (2006/93), N40°03.686' E19°51.462', 105m; singled, beaten, waternet.

286: Sarandë district, Mezopotam, Bistricë River and riverside pasture at the village, 11.05.2006 (2006/94), N39°54.528' E20°06.173', 35m; singled, beaten, soil sample (pasture soil).

287: Delvinë district, Gjerë Mts, Muzinë, Syri i Kaltër, karst springs W of the village, 12.05.2006 (2006/95), N39°55.286' E20°11.330', 155m; singled, beaten, waternet, sweeping net sample (streamside bush).

22–24.05.2006 (leg. Zoltán Barina, Tamás Deli, Dániel Pifkó)

288: Permët district, Dhëmbel Mts, limestone rocks on the E slope of Mt. Dhëmbel, 22.05.2006 (210160), N40°12.181' E20°19.004', 1965m; singled.

289: Permët district, Dhëmbel Mts, melting snow in the peak region of Mt. Dhëmbel, 22.05.2006 (15Mn), N40°11.956' E20°18.879', 2010m; singled.

290: Permët district, Dhëmbel Mts, limestone rocks in the peak region of Mt. Dhëmbel, 22.05.2006 (160null), N40°11.598' E20°18.857', 2050m; singled.

291: Permët district, Nemerçkë Mts, Poliçani, limestone rocks between Poliçani and Gataku Peaks, NE of the village, 23.05.2006 (4/1), N40°09.250' E20°22.076', 2120m; singled.

292: Permët district, Nemerçkë Mts, open rocky grassland on the SW slope of Mt. Poliçani, 23.05.2006 (4/2), N40°10.199' E20°21.123', 2060m; singled.

293: Permët district, Nemerçkë Mts, limestone rocks on the NW slope of Mt. Poliçani, SE of Dhëmbel Pass, 23.05.2006 (4/3), N40°11.933' E20°20.359', 1535m; singled.

294: Permët district, Nemerçkë Mts, Leushë, N slope of Mt. Poliçani E of Dhëmbel Pass, S of the village, 24.05.2006 (5), N40°13.205' E20°21.388', 660m; singled.

295: Permët district, Dangelli region, Grabovë, limestone gorge of Lengariçë River NW of the village, 24.05.2006 (6), N40°14.671' E20°26.222', 335m; singled.

17–22.07.2006 (leg. Zoltán Barina, Gergely Király, Csaba Németh, Dániel Pifkó)

296: Kolonjë district, Grammos Mts, Rehovë, brook in the valley of Lasishta River, E of the village, 17.07.2006 (9722), N40°20.210' E20°43.822', 1605m; singled.

297: Kolonjë district, Grammos Mts, Rehovë, mountain pasture on the W slope of Mt. Meci, E of the village, 17.07.2006 (9750), N40°20.162' E20°44.438', 1875m; singled.

298: Kolonjë district, Grammos Mts, Rehovë, brook valley on the W slope of Mt. Meci, E of the village, 18.07.2006 (9821), N40°20.581' E20°44.629', 1965m; singled.

299: Kolonjë district, Grammos Mts, Starjë, brook in the valley of Alikolar Stream, E of the village, 19.07.2006 (9949), N40°21.677' E20°45.275', 1865m; singled.

300: Kolonjë district, Grammos Mts, Rehovë, mountain pasture on the slope of Mt. Varibob, NW of Mt. Qukapeci, 19.07.2006 (004), N40°21.973' E20°46.231', 2250m; singled.

301: Korçë district, Vithkuq, limestone rocks on the NE ridge of Mt. Rungajë, SW of the village, 20.07.2006 (10053), N40°30.518' E20°33.920', 1735m; singled.

302: Korçë district, Vithkuq, limestone rocks on the N slope of Mt. Rungajë, SW of the village, 20.07.2006 (10064), N40°30.328' E20°33.075', 1730m; singled.

303: Korçë district, Vithkuq, limestone rocks on the N slope of Mt. Rungajë, W of the village, 20.07.2006 (10081), N40°31.135' E20°33.673', 1500m; singled.

304: Kolonjë district, Qesara, serpentine rocks N of the village, 21.07.2006 (10147), N40°25.096' E20°32.076', 1215m; singled.

305: Kolonjë district, Grammos Mts, Sotina Stream and alder forest W of Mt. Kameniku, 22.07.2006 (10206), N40°12.646' E20°39.412', 1050m; singled.

10–12.08.2006 (leg. Zoltán Barina, Dániel Pifkó, Dávid Schmidt)

306: Tepelenë district, Kendrevicë Mts, Lekdush, riverbed of Bencë River N of the village, 10.08.2006 (10344), N40°15.109' E19°57.916', 245m; singled.

307: Tepelenë district, Kendrevicë Mts, Dragot, scrubby pasture E of the village, 11.08.2006 (10362), N40°17.270' E20°04.997', 555m; singled.

308: Tepelenë district, Kendrevicë Mts, Dragot, scrubby pasture E of the village, 11.08.2006 (10363), N40°17.233' E20°04.997', 605m; singled.

309: Tepelenë district, Kendrevicë Mts, Kodra, limestone rocks E of the village, 11.08.2006 (10379), N40°16.549' E20°05.638', 1270m; singled.

310: Tepelenë district, Kendrevicë Mts, Matohasanaj, pasture on limestone W of the village, 12.08.2006 (10463), N40°21.333' E19°48.260', 950m; singled.

311: Tepelenë district, Kendrevicë Mts, Matohasanaj, ravine on limestone W of the village, 12.08.2006 (10474), N40°20.434' E19°46.816', 1485m; singled.

312: Tepelenë district, Kendrevicë Mts, rocky grassland on the NE slope of Mt. Tartari, 12.08.2006 (10485), N40°20.245' E19°46.481', 1680m; singled.

313: Tepelenë district, Kendrevicë Mts, rocky grassland on the peak of Mt. Tartari, 12.08.2006 (10488), N40°20.143' E19°45.897', 1950m; singled.

314: Tepelenë district, Kendrevicë Mts, limestone rock NE of the peak of Mt. Tartari, 12.08.2006 (10504), N40°21.023' E19°46.577', 1465m; singled.

20–27.08.2006 (leg. Zoltán Fehér, András Hunyadi, Tamás Huszár, Dávid Murányi)

315: Librazhd district, Mirakë, Shkumbin River and limestone rocks at Kamarë Bridge, 20.08.2006 (2006/133), N41°09.809' E20°13.821', 190m; singled, beaten, waternet.

316: Librazhd district, Mirakë, right sidespring of Shkumbin River above Kamarë Bridge, 20.08.2006 (2006/133A), N41°09.917' E20°14.297', 200m; singled, waternet.

317: Skrapar district, Osojë, secondary forest along the Çorovodë–Backë road, 20.08.2006 (2006/134), N40°30.031' E20°17.161', 1010m; singled.

318: Skrapar district, Ostrovicë Mts, Backë, limestone rocks and rocky grassland along the path to Frengu Peak, N of the village, 20.08.2006 (2006/135), N40°30.983' E20°24.422', 1450m; singled.

319: Skrapar district, Ostrovicë Mts, Backë, limestone rocks and mountain pasture beneath the Frengu Peak, N of the village, 20.08.2006 (2006/136), N40°31.314' E20°24.833', 1750m; singled, light trap, sweeping net sample (mountain pasture).

320: Skrapar district, Ostrovicë Mts, Backë, Krojmbret Spring and its outlet between the Frengu and Faqekuq Peaks, NE of the village, 21.08.2006 (2006/137), N40°31.753' E20°25.152', 1965m; singled, waternet.

321: Skrapar district, Ostrovicë Mts, limestone rocks and rocky grassland in the peak region of Faqekuq Peak, 21.08.2006 (2006/138), N40°31.947' E20°25.538', 2340m; singled, sweeping net.

322: Skrapar district, Ostrovicë Mts, Backë, cave SE of Frengu Peak, NE of the village, 21.08.2006 (2006/139), N40°31.472' E20°24.980', 1850m; singled, soil sample (cave soil).

323: Skrapar district, Çorovodë, Grand Hotel, house walls, 21.08.2006 (2006/140), N40°30.269' E20°13.535', 270m; singled.

324: Skrapar district, Tomor Mts, Çorovodë, limestone rocks at the junction to Gradec, NE of the city, 22.08.2006 (2006/141), N40°32.609' E20°16.309', 1000m; singled.

325: Skrapar district, Tomor Mts, Radesh, dry forest at the military camp entrance, 22.08.2006 (2006/142), N40°31.818' E20°15.452', 740m; singled, sweeping net sample (dry forest edge).

326: Skrapar district, Tomor Mts, Çorovodë, limestone gorge of Çorovodë Stream NE of the city, 22.08.2006 (2006/143), N40°31.338' E20°15.444', 540m; singled, sweeping net.

327: Skrapar district, Tomor Mts, Radesh, limestone rocks, pasture and secondary forest at Dëvri Pass, NE of the village, 22.08.2006 (2006/144), N40°

33.365' E20°16.544', 1150m; singled, soil sample (cave soil and soil from nut bush).

328: Skrapar district, Turbehovë, dry secondary vegetation in a right side valley of Çorovodë Stream, SW of the village, 22.08.2006 (2006/145), N40°32.531' E20°20.760', 850m; singled, light trap.

329: Skrapar district, Ostrovicë Mts, Turbehovë, limestone gorge of Krishovë Stream NE of the village, 23.08.2006 (2006/146), N40°33.540' E20°23.450', 1040m; singled, beaten, waternet, soil sample (moss from rocks).

330: Skrapar district, Tomor Mts, small limestone gorge N of Dëvri Pass along the road to Zaloshnje, 23.08.2006 (2006/147), N40°34.287' E20°17.279', 1110m; singled, soil samples (bird nest, soil from rocks).

331: Skrapar district, Tomor Mts, Ujanik, gorge of Ujanik Stream above the village, 23.08.2006 (2006/148), N40°37.969' E20°12.969', 965m; singled, beaten, waternet, soil samples (cave soil and mouse nest, soil from rocks).

332: Berat district, Tomor Mts, limestone rocks and rocky grassland in the peak region of Mt. Tomor, 23.08.2006 (2006/149), N40°38.468' E20°09.448', 2375m; singled

333: Skrapar district, Tomor Mts, grassland on Kulmak Pass, close to the bektashi teqe, 23.08.2006 (2006/150), N40°37.116' E20°11.945', 1485m; singled, light trap.

334: Skrapar district, Tomor Mts, Treblja, beech forest NW of the village, 24.08.2006 (2006/151), N40°40.879' E20°11.009', 1290m; singled, soil sample (beech litter).

335: Skrapar district, Tomor Mts, Terovë, limestone gorge above the village, 24.08.2006 (2006/152), N40°42.748' E20°11.023', 855m; singled.

336: Skrapar district, Tomor Mts, limestone rocks on the NE slope of Mt. Çuka Parizan, 24.08.2006 (2006/153), N40°43.275' E20°10.321', 1130m; singled.

337: Skrapar district, Tomor Mts, beech forest and subalpine grassland on the NE slope of Mt. Çuka Partizan, 24.08.2006 (2006/154), N40°43.198' E20°10.166', 1280m; singled, light trap, sweeping net sample (subalpine grassland), soil sample (beech litter).

338: Berat district, Tomor Mts, pine forest and alpine grassland on the NE slope of Mt. Çuka Partizan, 25.08.2006 (2006/155), N40°42.983' E20°09.403', 1950m; singled, sweeping net.

339: Skrapar district, Terovë, Tomorica River beneath (E of) the village, 25.08.2006 (2006/156), N40°42.886' E20°13.337', 345m; singled.

340: Gramsh district, Gramsh, motel at the S edge of the city, 25.08.2006 (2006/157), N40°51.643' E20°11.303', 230m; light trap.

341: Gramsh district, Tërvol, limestone gorge of Holta Stream above the village, 26.08.2006 (2006/158), N40°55.562' E20°13.390', 250m; singled, beaten, waternet, soil sample (soil and moss from rocks).

342: Kavajë district, Lekaj, channel and its bushy shore vegetation at the junction to Luzi i Madh, 26.08.2006 (2006/159), N41°06.679' E19°36.345', 25m; singled, sweeping net sample (bushy shore vegetation).

343: Kavajë district, Bardhor, sandy seashore S of Kepi i Lagjit, 26.08.2006 (2006/160), N41°07.624' E19°26.954', 0m; singled, soil sample (seashore debris).

344: Shkodër district, Shkodër, Hotel Kaduku, house walls, 27.08.2006 (2006/161), N42°03.439' E19°30.095', 20m; singled.

10–22.04.2007 (leg. Zoltán Barina, Annamária Csóka, Dániel Pifkó, Balázs Pintér)

345: Shkodër district, Mjedë, limestone rocks near Drin River, NE of the village, 12.04.2007 (víztározó 1), N42°00.881' E19°37.703', 85m; singled.

346: Shkodër district, Mjedë, Drin River N of the village, 12.04.2007 (víztározó 2), N42°00.989' E19°37.711', 40m; singled.

347: Gjirokastrë district, Lunxherisë Mts, Suhë, Suhë River NE of the village, 18.04.2007 (szurdok 1), N40°05.387' E20°17.315', 255m; singled.

348: Gjirokastrë district, Lunxherisë Mts, Suhë, limestone rocks along the road in the valley of Suhë River, NE of the village, 18.04.2007 (szurdok 2), N40°05.473' E20°17.503', 375m; singled.

349: Gjirokastrë district, Lunxherisë Mts, Suhë, deciduous forest in the valley of Suhë River, NE of the village, 18.04.2007 (szurdok 3), N40°05.738' E20°17.807', 355m; singled.

18–28.05.2007 (leg. Zoltán Barina, Csaba Németh, Dániel Pifkó)

350: Korçë district, Thatë Mts, Podgorije, limestone rocks E of the village, between Mt. Bregu i Stanit and Mt. Meza, 20.05.2007 (11436), N40°49.074' E20°50.965', 1860m; singled.

351: Korçë district, Thatë Mts, Podgorije, limestone rocks E of the village, E of Mt. Bregu i Stanit, 20.05.2007 (009), N40°49.529' E20°51.169', 1825m; singled.

352: Korçë district, Moravë Mts, Dardhë, clear SW of the village, E of Mt. Lofka, 21.05.2007 (11536), N40°29.127' E20°46.684', 1770m; singled.

353: Korçë district, Thatë Mts, Liqenas, limestone rocks NW of the village, E of Mt. Buz e Korutës, 22.

05.2007 (023), N40°48.145' E20°52.445', 1745m; singled.

354: Korçë district, Thatë Mts, Liqenas, limestone rocks NW of the village, 22.05.2007 (11614), N40°49.099' E20°52.370', 1915m; singled.

355: Korçë district, Thatë Mts, Liqenas, limestone rocks NW of the village, 22.05.2007 (11619), N40°49.322' E20°52.732', 1780m; singled.

356: Korçë district, Vallamarë Mts, Strelcë, edge of the limestone gorge of Verbë River NE of the village, 23.05.2007 (11648), N40°44.892' E20°31.309', 935m; singled.

357: Pogradec district, Kamjë Mts, Osnat, conglomerate on Mt. Rzhan, N of the village, 24.05.2007 (11707), N40°51.117' E20°35.931', 1575m; singled.

358: Korçë district, Zvirinë, Trifti Spring N of the village, 24.05.2007 (035), N40°47.644' E20°44.128', 835m; singled.

359: Korçë district, Thatë Mts, Zvezdë, limestone rocks SE of Mt. Zvezdë, N of the village, 25.05.2007 (11723), N40°44.515' E20°51.811', 1180m; singled.

360: Korçë district, Thatë Mts, Zvezdë, limestone rocks on Mt. Zvezdë, N of the village, 25.05.2007 (11747), N40°45.390' E20°50.967', 1720m; singled.

361: Korçë district, Vithkuq, limestone rocks N of the village, 27.05.2007 (11843), N40°32.260' E20°34.754', 1395m; singled.

362: Korçë district, Vithkuq, Osum River and its limestone gorge NW of the village, 27.05.2007 (11856), N40°32.268' E20°34.198', 1250m; singled.

24.06–01.07.2007 (leg. László Dányi, Zoltán Eröss, Zoltán Fehér, András Hunyadi, Dávid Murányi)

363: Kukës district, Kukës, gorge of Lumë River E of the city, 24.06.2007 (2007/103), N42°03.979' E20°29.278', 340m; singled, beaten, waternet.

364: Kukës district, Kukës, gorge of Lumë River E of the city, 24.06.2007 (2007/104), N42°03.530' E20°30.109', 370m; singled, beaten, waternet.

365: Kukës district, Lojme, spring outlet in a secondary alder forest, N of the village, 24.06.2007 (2007/105), N41°59.898' E20°31.393', 815m; singled, beaten, waternet.

366: Kukës district, Lojme, stream and its gorge S of the village, 24.06.2007 (2007/106), N41°59.200' E20°31.715', 900m; singled, beaten, waternet, soil samples (soil, moss).

367: Kukës district, Novoselë, wet grassland and open stream N of the village, 24.06.2007 (2007/107), N41°59.056' E20°34.113', 1220m; singled, beaten, waternet, sweeping net, sweeping net sample (wet grassland).

- 368: Kukës district, Novoselë, spring and roadside vegetation SE of the village, 24.06.2007 (2007/108), N41°58.094' E20°34.626', 1280m; singled, sweeping net, soil sample (moss).
- 369: Kukës district, Turaj, open stream and alpine grassland along the Novoselë–Kolesjan road, NE of the village, 24.06.2007 (2007/109), N41°57.222' E20°34.160', 1430m; singled, beaten, waternet, sweeping net.
- 370: Kukës district, Turaj, stream and its gorge at the village, 24.06.2007 (2007/110), N41°56.298' E20°33.480', 1450m; singled, beaten, waternet.
- 371: Kukës district, Turaj, open brook and alpine grassland along the Novoselë–Kolesjan road, E of the village, 24.06.2007 (2007/111), N41°56.594' E20°29.879', 1800m; singled, beaten, waternet, sweeping net sample (alpine grassland).
- 372: Kukës district, Turaj, beech forest and bog beneath the Novoselë–Kolesjan road, E of the village, 24.06.2007 (2007/111E), N41°56.375' E20°29.866', 1715m; singled, sweeping net, soil samples (beech litter, turf, soil from cotton grass bog).
- 373: Kukës district, Gjalica e Lumës Mts, Bjëshkë, rocky grassland SE of the village, 24.06.2007 (2007/112), N41°59.679' E20°29.099', 1760m; singled, light trap.
- 374: Kukës district, Gjalica e Lumës Mts, Bjëshkë, limestone rocks above the village, E of the ridge, 25.06.2007 (2007/113), N41°59.938' E20°28.301', 1885m; singled.
- 375: Kukës district, Gjalica e Lumës Mts, limestone rocks W of the ridge, 25.06.2007 (2007/114), N41°59.959' E20°27.680', 2060m; singled, soil sample (litter).
- 376: Kukës district, Gjalica e Lumës Mts, beech and pine forest W of the ridge, 25.06.2007 (2007/115), N41°59.974' E20°27.464', 1940m; singled, soil sample (litter).
- 377: Kukës district, Gjalica e Lumës Mts, Nangë, forest spring above the village, 25.06.2007 (2007/116), N42°00.491' E20°26.841', 1530m; singled, soil sample (moss).
- 378: Kukës district, Gjalica e Lumës Mts, rocky alpine grassland in the peak region of Mt. Gjalica e Lumës, 25.06.2007 (2007/117), N42°00.569' E20°28.179', 2350m; singled.
- 379: Kukës district, Gjalica e Lumës Mts, rocky alpine grassland on the sidepeak of Mt. Gjalica e Lumës, 25.06.2007 (2007/117B), N42°00.725' E20°28.179', 2440m; singled.
- 380: Kukës district, Gjalica e Lumës Mts, Bjëshkë, open spring above the village, E of the ridge, 25.06.2007 (2007/118), N42°00.225' E20°28.433', 2020m; singled, soil sample (moss).
- 381: Kukës district, Gjalica e Lumës Mts, Bjëshkë, spring and ruderal vegetation in the village, 25.06.2007 (2007/119), N41°59.962' E20°28.613', 1820m; singled, beaten, waternet.
- 382: Kukës district, Gjalica e Lumës Mts, Bicaj, Shkallë Bicaj, gorge of Tershanë Stream, 25.06.2007 (2007/120), N41°59.518' E20°25.333', 500m; singled.
- 383: Kukës district, Resk, limestone rocks S of the village, 26.06.2007 (2007/121), N41°55.558' E20°23.224', 690m; singled.
- 384: Kukës district, Lusën, limestone rocks at the village, 26.06.2007 (2007/122), N41°54.581' E20°24.540', 1010m; singled.
- 385: Kukës district, Bushtricë, limestone rocks and Vau i Cajës Stream at Lapavë Bridge, N of the village, 26.06.2007 (2007/123), N41°53.696' E20°25.013', 600m; singled, beaten, waternet.
- 386: Kukës district, Vasiaj, wet secondary forest at the village, 26.06.2007 (2007/124), N41°51.905' E20°25.908', 1070m; singled.
- 387: Dibër district, Korab Mts, Radomirë, spring, stream and streamside vegetation E of the village, 26.06.2007 (2007/125), N41°49.032' E20°30.016', 1440m; singled, beaten, waternet.
- 388: Dibër district, Korab Mts, Radomirë, torrent, limestone rocks and cave E of the village, 26.07.2007 (2007/126), N41°49.131' E20°30.160', 1460m; singled, beaten, waternet, soil sample (moss).
- 389: Dibër district, Korab Mts, Fushë Korabit, limestone rocks and dry pasture, 26.07.2007 (2007/127), N41°49.074' E20°31.621', 1880m; singled, light trap, soil sample (moss), sweeping net sample (dry pasture).
- 390: Dibër district, Korab Mts, Fushë Korabit, spring and wet meadow, 26.06.2007 (2007/127F), N41°49.210' E20°31.563', 1880m; singled, sweeping net.
- 391: Dibër district, Korab Mts, open brook, cave and limestone rocks above Fushë Korabit, 27.06.2007 (2007/128), N41°49.121' E20°32.240', 1905m; singled, beaten, waternet, soil sample (moss from cave entrance).
- 392: Dibër district, Korab Mts, limestone rocks along the footpath from Fushë Korabit to Mt. Korab, 27.06.2007 (2007/129), N41°48.312' E20°33.653', 2170m; singled.
- 393: Dibër district, Korab Mts, torrent and wet meadow beneath Mt. Korab, 27.06.2007 (2007/130), N41°48.143' E20°33.285', 2300m; singled, beaten, waternet, sweeping net, soil samples (turf, moss).
- 394: Dibër district, Korab Mts, limestone rocks on the NE slope of Mt. Korab, 27.06.2007 (2007/131), N41°48.005' E20°32.996', 2360m; singled.

- 395: Dibër district, Korab Mts, rocks on the ridge NW to the peak of Mt. Korab, 27.06.2007 (2007/132), N41°47.716' E20°32.537', 2685m; singled.
- 396: Dibër district, Korab Mts, rocky grassland in the peak region of Mt. Korab, 27.06.2007 (2007/133), N41°47.601' E20°32.634', 2750m; singled, soil sample (turf).
- 397: Dibër district, Korab Mts, cave on the N slope of Mt. Korab, 27.06.2007 (2007/134), N41°47.823' E20°32.722', 2530m; singled, soil samples (guano of bats, moss).
- 398: Dibër district, Korab Mts, snow smelt feeded bog on the NE slope of Mt. Korab, 27.06.2007 (2007/135), N41°47.948' E20°33.251', 2300m; singled, soil sample (moss).
- 399: Dibër district, Korab Mts, large bog and its inflow torrents beneath Mt. Korab, 27.06.2007 (2007/136), N41°48.229' E20°33.642', 2165m; singled, beaten, waternet, soil sample (mossy turf).
- 400: Dibër district, Korab Mts, pasture above Fushë Korabit, 27.06.2007 (2007/137), N41°49.022' E20°33.041', 1935m; singled, light trap.
- 401: Dibër district, Korab Mts, open stream above Fushë Korabit, 28.06.2007 (2007/138), N41°49.215' E20°32.738', 1945m; singled, beaten, waternet.
- 402: Dibër district, Korab Mts, cave and limestone rocks above Fushë Korabit, 28.06.2007 (2007/139), N41°48.921' E20°32.691', 2010m; singled, soil sample (moss from cave).
- 403: Dibër district, Korab Mts, spring and open brook above Fushë Korabit, 28.06.2007 (2007/140), N41°49.251' E20°31.543', 1940m; singled, beaten, waternet.
- 404: Dibër district, Korab Mts, open brook, wet grassland and limestone rocks beneath Fushë Korabit, 28.06.2007 (2007/141), N41°49.149' E20°31.304', 1875m; singled, beaten, waternet, sweeping net.
- 405: Dibër district, Korab Mts, spring and torrent beneath Fushë Korabit, 28.06.2007 (2007/142), N41°49.207' E20°30.727', 1770m; singled, beaten, waternet.
- 406: Dibër district, Korab Mts, Radomirë, Radomirë Stream and pasture E of the village, 28.06.2007 (2007/143), N41°49.022' E20°30.022', 1445m; singled, beaten, waternet, sweeping net sample (pasture).
- 407: Dibër district, Fushë Muhur, Drin i Zi River and riverside willow bush at the inflow of Murrës Stream, 29.06.2007 (2007/144), N41°40.600' E20°20.213', 400m; singled, beaten, waternet.
- 408: Dibër district, Lurë area, Cidhnë, spring and stream with degraded shore vegetation along the road to Grikno, 29.06.2007 (2007/145), N41°45.593' E20°16.823', 600m; singled, beaten, waternet.
- 409: Dibër district, Lurë area, karst forest, limestone rocks and dry grassland along the Cidhnë–Fushë Lurë road, 29.06.2007 (2007/147), N41°48.892' E 20°16.650', 1330m; singled, sweeping net, soil sample (decaying wood).
- 410: Dibër district, Lurë area, Fushë Lurë, spring along the Cidhnë–Fushë Lurë road, E of the village, 29.06.2007 (2007/148), N41°48.837' E 20°14.773', 1320m; singled, waternet.
- 411: Dibër district, Lurë area, Fushë Lurë, rocks and secondary hornbeam forest along the Cidhnë–Fushë Lurë road, E of the village, 29.06.2007 (2007/149), N41°48.819' E 20°14.171', 1220m; singled, beaten.
- 412: Dibër district, Lurë area, Fushë Lurë, stream at the lumber-yard, 29.06.2007 (2007/150), N41°48.567' E20°13.492', 1055m; singled, beaten, waternet.
- 413: Dibër district, Lurë area, Fushë Lurë, garden of Hotel Mexhit, 29.06.2007 (2007/151), N41°48.907' E20°12.549', 1075m; singled.
- 414: Dibër district, Lurë area, Krej Lurë, pasture SW of the village, 29.06.2007 (2007/152), N41°49.934' E20°10.513', 1010m; singled, waternet, sweeping net, soil samples (beech and nut litter, streamshore turf), sweeping net sample (pasture).
- 415: Dibër district, Lurë area, Krej Lurë, limestone rocks NW of the village, 29.06.2007 (2007/153), N41°50.291' E20°09.987', 1050m; singled.
- 416: Dibër district, Cerjan, limestone rocks NE of the village, 30.06.2007 (2007/154), N41°42.091' E20°29.131', 900m; singled.
- 417: Bulqizë district, Lopë Mts, Valikardhë, Zalli i Qytetit River and the nearby limestone rocks N of the village, 30.06.2007 (2007/155), N41°30.593' E20°18.908', 595m; singled, sweeping net, soil sample (moss).
- 418: Mat district, Fshat, Mat River, its gallery and limestone rocks at Vashë Bridge, 30.06.2007 (2007/156), N41°28.064' E20°06.283', 360m; singled, beaten, waternet, soil sample (dry moss).
- 419: Mat district, Fshat, limestone rocks above Vashë Bridge, 30.06.2007 (2007/157), N41°28.181' E20°06.090', 360m; singled.
- 420: Mat district, Gropë Mts, Gurri i Bardhë, secondary forest along the Klos–Elbasan road, S of the village, 30.06.2007 (2007/158), N41°26.759' E20°04.489', 800m; singled, soil sample (moss).
- 421: Mat district, Gropë Mts, Gurri i Bardhë, gorge of Guisë Stream and open stream along the Klos–Elbasan road, S of the village, 30.06.2007 (2007/159), N41°25.839' E20°05.518', 1025m; singled, beaten, waternet, soil sample (decaying wood).

422: Tiranë district, Gropë Mts, limestone rocks and grassland at Shtyllë Pass, along the Klos–Elbasan road, 30.06.2007 (2007/160), N41°22.270' E20°05.126', 1495m; singled, soil sample (litter), sweeping net sample (grassland).

423: Tiranë district, Gropë Mts, Shëngjergj, rocky grassland along the Klos–Elbasan road, S of the village, 30.06.2007 (2007/161), N41°21.091' E20°06.974', 1390m; singled, sweeping net.

424: Tiranë district, Gropë Mts, Shëngjergj, café bar along the Klos–Elbasan road, E of the village, 30.06.2007 (2007/162), N41°20.186' E20°08.424', 1385m; singled.

425: Tiranë district, Gropë Mts, Shëngjergj, beech forest E of the village, 30.06.2007 (2007/163), N41°19.895' E20°08.454', 1370m; singled, soil samples (beech litter, decaying wood).

426: Tiranë district, Gropë Mts, Shëngjergj, rocks SE of the village, 30.06.2007 (2007/164), N41°19.264' E20°08.842', 1240m; singled.

427: Tiranë district, Gropë Mts, Vakumonë, beech forest E of the village, 30.06.2007 (2007/165), N41°16.165' E20°05.088', 1155m; singled, soil sample (beech litter).

428: Tiranë district, Gropë Mts, Vakumonë, beech forest SE of the village, 30.06.2007 (2007/166), N41°15.109' E20°05.801', 1210m; singled, soil sample (soil).

429: Korçë district, Vithkuq, upper gorge of Osum River W of the village, 01.07.2007 (2007/167), N40°32.268' E20°34.198', 1300m; singled, beaten, waternet, soil samples (soil, moss)

430: Korçë district, Vithkuq, dry grassland and a spring E of the village, 01.07.2007 (2007/168), N40°31.698' E20°38.062', 1145m; singled, sweeping net sample (dry grassland).

431: Pogradec district, Pishkapat, Ohrid Lake S of the village, 01.07.2007 (2007/169), N40°59.641' E20°38.268', 710m; singled, waternet.

16–19.08.2007 (leg. Zoltán Barina, Dániel Pifkó)

432: Korçë district, Vallamarë Mts, Moglicë, mountain pasture at Mushka Pass, N of the village, 16.08.2007 (12614), N40°45.073' E20°26.233', 1840m; singled.

433: Korçë district, Vallamarë Mts, alpine lake on the N slope of a mountain S of Mt. Vallamarë, 16.08.2007 (14), N40°46.335' E20°28.063', 2025m; singled.

434: Pogradec district, Vallamarë Mts, limestone rocks NW of the peak of Mt. Gurri i Topit, 18.08.2007 (12739), N40°50.854' E20°26.492', 1850m; singled.

435: Pogradec district, Vallamarë Mts, Shpellë, limestone rocks S of the village, 18.08.2007 (12745), N40°51.986' E20°25.717', 1710m; singled.

436: Pogradec district, Vallamarë Mts, Shpellë, brook on the NE slope of Mt. Lukova, SW of the village, 18.08.2007 (4), N40°53.730' E20°24.065', 1835m; singled.

437: Pogradec district, Vallamarë Mts, Shpellë, brook in beech forest on the E slope of Mt. Lukova, W of the village, 19.08.2007 (5), N40°54.049' E20°24.929', 1375m; singled.

17–23.08.2007 (leg. Zoltán Fehér, Lilla Tamás)

438: Korçë district, Liqenas, Prespa Lake NE of the village, 17.08.2007 (2007/171), N40°47.478' E20°54.560', 860m; singled.

439: Korçë district, Liqenas, Ishull i Vogel, Prespa Lake E of the village, 17.08.2007 (2007/172), N40°47.491' E20°55.944', 860m; singled, debris sample.

440: Kolonjë district, Mollas, spring along the Korçë–Ersekë road, N of the village, 17.08.2007 (2007/173), N40°28.050' E20°40.326', 980m; singled, mud sample.

441: Kolonjë district, Barmash, limestone rocks along the Korçë–Ersekë road, S of the village, 17.08.2007 (2007/174), N40°16.127' E20°36.390', 880m; singled.

442: Kolonjë district, Barmash, spring near the bridge at the conjunction to Shalës, S of the village, 17.08.2007 (2007/175), N40°14.278' E20°38.601', 870m; singled, mud sample.

443: Përmet district, Leusë, Leusë Spring in the village, 18.08.2007 (2007/176), N40°13.149' E20°21.406', 410m; singled, mud sample.

444: Përmet district, Benjë, gorge of Lengaricë River E of the village, 18.08.2007 (2007/177), N40°14.678' E20°26.262', 335m; singled, soil sample.

445: Përmet district, Petran, confluence of Vjosë and Lengaricë Rivers W of the village, 18.08.2007 (2007/178), N40°12.566' E20°24.758', 285m; singled.

446: Tepelenë district, Dragot, along the Tepelenë–Këlcyre road, E of the bridge of Vjosë River, 18.08.2007 (2007/179), N40°17.930' E20°05.316', 180m; singled, soil sample.

447: Gjirokastër district, Gjirokastër, Kalaje e Gjirokastërit, castle hill, 19.08.2007 (2007/180), N40°04.362' E20°08.350', 360m; singled, soil sample.

448: Delvinë district, Gjerë Mts, Muzinë, Syri i Kaltër, karst springs W of the village, 19.08.2007 (2007/181), N39°55.471' E20°11.508', 165m; singled.

449: Sarandë district, Butrinti Archeological Site, Butrinti Lake and limestone walls of the ancient ruins, 19.08.2007 (2007/182), N39°44.721' E20°01.173', 10m; singled.

450: Sarandë district, Borsh, stream near the seashore beneath the village, 20.08.2007 (2007/183), N40°02.619' E19°51.334', 0m; singled.

451: Vlorë district, Himarë, Llamani Beach S of the village, 20.08.2007 (2007/184), N40°04.848' E19°46.048', 0m; singled.

452: Vlorë district, Orikum, seashore at the naval base, 21.08.2007 (2007/185), N40°19.553' E19°27.151', 0m; soil sample (seagrass).

453: Lushnjë district, Divjakë, Divjakë Beach W of the city, 21.08.2007 (2007/186), N40°58.281' E19°28.583', 0m; soil sample (seagrass).

454: Durrës district, Durrës, Durrës Beach S of the city, 21.08.2007 (2007/187), N41°16.125' E19°31.060', 0m; soil sample (seagrass).

455: Tiranë district, Dajt Mts, W slope of Mt. Dajt, 22.08.2007 (2007/188), N41°22.405' E19°55.190', 1300m; singled, soil sample.

456: Tiranë district, Dajt Mts, limestone rocks and beech forest on the W slope of Mt. Dajt, 22.08.2007 (2007/189), N41°22.387' E19°55.202', 1450m; singled.

457: Tiranë district, Dajt Mts, limestone rocks and beech forest in the peak region of Mt. Dajt, 22.08.2007 (2007/190), N41°22.134' E19°55.326', 1600m; singled.

458: Durrës district, Mali Robit, seashore at the settlement, 23.08.2007 (2007/191), N41°13.774' E19°30.744', 0m; soil sample (seagrass).

459: Pogradec district, Pishkupa, Ohrid Lake N of the village, 23.08.2007 (2007/192), N41°01.831' E20°38.162', 700m; singled.

460: Pogradec district, Derven Mts, limestone rocks along the Librazhd–Pogradec road, E of Thanë Pass, 23.08.2007 (2007/193), N41°03.881' E20°37.581', 860m; singled,

08–13.03.2008 (leg. Szilvia Czigány, Dávid Murányi)

461: Shkodër district, Shkodër, Kalaje e Rozafat, castle walls and rocky grassland, 08.03.2008 (2008/5), N42°02.838' E19°29.633', 75m; singled, soil sample (soil and moss from ruderal rocky grassland),

462: Shkodër district, Laç-Qyrsaç, brook in a pine forest mixed with macchia, NE of the city, 08.03.2008 (2008/6), N42°01.013' E19°39.636', 115m; singled,

beaten, waternet, soil sample (brookshore litter and grass tufts),

463: Shkodër district, Oblikë, Bunë River, shore vegetation and littoral puddles E of the village, 09.03.2008 (2008/7), N42°00.849' E19°27.911', 5m; singled, beaten, waternet, soil sample (shore deposit), plancton sample (littoral puddles),

464: Krujë district, Krujë, pine forest beneath the city, 09.03.2008 (2008/8), N41°29.413' E19°46.095', 230m; singled, soil sample (pine litter and moss),

465: Skrapar district, Bogovë, Osum River, gallery, oak forest and sidestream N of the village, 10.03.2008 (2008/9), N40°34.742' E20°08.075', 165m; singled, beaten, waternet, soil sample (oak litter and moss),

466: Vlorë district, Radhimë, seashore N of the village, 11.03.2008 (2008/10), N40°23.349' E19°28.897', 0m; singled, soil sample (dead seagrass deposit).

467: Vlorë district, Çikë Mts, pine forest N of Llogara Pass, 11.03.2008 (2008/11), N40°12.698' E19°34.702', 815m; singled, beaten, soil sample (moss).

468: Vlorë district, Çikë Mts, spring and its outlet N of Llogara Pass, 11.03.2008 (2008/12), N40°12.187' E19°35.254', 980m; singled, beaten, waternet.

469: Vlorë district, Dhërmi, Dhërmi Stream in the village, 11.03.2008 (2008/13), N40°09.330' E19°38.374', 140m; singled, beaten, waternet.

470: Vlorë district, Dhërmi, macchia S of the village, 11.03.2008 (2008/14), N40°08.387' E19°39.046', 160m; singled, beaten, soil sample (macchia soil).

471: Vlorë district, Lias, grassland and limestone rocks in Canion Gjipesë, S of the village, 11.03.2008 (2008/15), N40°08.622' E19°40.620', 255m; singled, beaten, waternet.

472: Sarandë district, Çikë Mts, Borsh, Ixuar Spring in the village, 12.03.2008 (2008/16), N40°03.686' E19°51.462', 105m; singled, beaten, waternet, soil sample (moss from springshore).

473: Vlorë district, Qeparo, seaside springs, rocky macchia and seashore N of the village, 12.03.2008 (2008/17), N40°03.134' E19°48.756', 5m; singled, beaten, waternet.

474: Sarandë district, Çikë Mts, Borsh, Borsh River and riverside macchia N of the village, 12.03.2008 (2008/18), N40°03.951' E19°50.892', 35m; singled, beaten, waternet, soil samples (sifted macchia litter, *Selaginella*).

475: Sarandë district, Piqeras, open oak wood N of the village, 12.03.2008 (2008/19), N40°02.647' E19°52.549', 290m; singled, beaten, soil sample (soil from beneath stones).

476: Sarandë district, Bunec, small stream in the village, 12.03.2008 (2008/20), N40°00.419' E19°54.299', 120m; singled, beaten, waternet.

477: Sarandë district, Shënvashije, puddle in a pasture S the village, 12.03.2008 (2008/21), N39°55.093' E19°59.299', 110m; plancton sample (puddle in a pasture).

478: Sarandë district, Mezopotam, Bistricë River E of the village, 12.03.2008 (2008/22), N39°55.249' E20°09.298', 100m; singled, waternet.

479: Delvinë district, Gjerë Mts, Muzinë, Syri i Kaltër, karst springs W of the village, 12.03.2008 (2008/23), N39°55.286' E20°11.330', 155m; singled, beaten, waternet.

480: Tepelenë district, Kendrevicë Mts, Progonat, Gurri Stream, its karst spring and its gorge E of the village, 13.03.2008 (2008/24), N40°12.602' E19°57.724', 950m; singled, beaten, waternet, soil sample (streamshore moss).

481: Tepelenë district, Kendrevicë Mts, Bencë, stream gorge S of the village, 13.03.2008 (2008/25), N40°14.953' E19°59.712', 915m; singled, beaten.

482: Tepelenë district, Kendrevicë Mts, Bencë, Bencë River and its gallery at the turkish aqueduct, NE of the village, 13.03.2008 (2008/26), N40°15.865' E20°00.439', 220m; singled, beaten, waternet, soil sample (oak litter).

483: Tepelenë district, Tepelenë, Uji i Ftohtë, karst springs and degraded forest, 13.03.2008 (2008/27), N40°15.011' E20°03.548', 165m; singled, beaten, waternet, soil sample (streamshore litter).

12–19.04.2008 (leg. Zoltán Barina, Zita Drahos, Róbert Gógh, Dániel Pifkó, Ferenc Pósa, Dávid Schmidt)

484: Peqin district, Dumrë area, Gradisht, scrubland on Mt. Gradishtës, S of the village, 12.04.2008 (12953), N40°58.278' E19°54.696', 205m; singled.

485: Vlorë district, Zvërnec, pine forest edge between Adriatic Sea and Nartë Lake, NW of the village, 13.04.2008 (13033), N40°31.718' E19°23.437', 5m; singled.

486: Vlorë district, Palasë, Rreze e Kanalit, sand dunes at the seashore, W of the village, 17.04.2008 (13189), N40°10.043' E19°35.277', 5m; singled.

487: Vlorë district, Lias, olive grove near to Canion Gjipesë, E of the village, 17.04.2008 (13200), N40°08.611' E19°40.729', 295m; singled.

488: Permët district, Dhëmbel Mts, Këlcyre, limestone rocks on the N slope of Mt. Mbrezhan, W of the city, 19.04.2008 (13272), N40°17.827' E20°10.400', 380m; singled.

24–31.05.2008 (leg. Zoltán Barina, Dániel Pifkó, Balázs Pintér)

489: Bulqizë district, Lopë Mts, Bulqizë, pine forest on serpentine, SE of the city, 24.05.2008 (1), N41°28.872' E20°14.723', 1480m; singled.

490: Bulqizë district, Lopë Mts, Bulqizë, grassland on serpentine on the N slope of Mt. Dozgi, S of the city, 24.05.2008 (2A), N41°28.629' E20°14.221', 1645m; singled.

491: Bulqizë district, Lopë Mts, Bulqizë, brook on serpentine on the NE ridge of Mt. Dozgi, SE of the city, 24.05.2008 (2B), N41°28.282' E20°14.767', 1755m; singled.

492: Bulqizë district, Lopë Mts, Bulqizë, opened grassland on serpentine near Zi Lake, SE of the city, 25.05.2008 (2C), N41°28.156' E20°15.520', 1855m; singled.

493: Bulqizë district, Lopë Mts, Bulqizë, brook and grassland near Zi Lake, SE of the city, 25.05.2008 (3), N41°28.122' E20°15.883', 1765m; singled.

494: Bulqizë district, Lopë Mts, Bulqizë, opened grassland on serpentine on the S slope of Mt. Shini, S of the city, 26.05.2008 (4), N41°27.463' E20°13.668', 1775m; singled.

495: Mat district, Gropë Mts, Fshat, scrubland on limestone on the N slope of Mt. Kjuteti, W of the village, 27.05.2008 (5A), N41°28.766' E20°04.887', 445m; singled.

496: Mat district, Gropë Mts, Fshat, brook on the S foot of Mt. Karbi, SW of the village, 27.05.2008 (5B), N41°28.531' E20°04.446', 470m; singled.

497: Bulqizë district, Kreshtës Mts, Valikardhë, rocky grassland on limestone on the S ridge of Mt. Temlishit, N of the village, 29.05.2008 (6A), N41°30.826' E20°18.854', 880m; singled.

498: Bulqizë district, Kreshtës Mts, Vajkal, beech forest edge on the E slope of Mt. Lepuri, W of the village, 30.05.2008 (6B), N41°30.601' E20°11.399', 1475m; singled.

499: Mat district, Kreshtës Mts, Fusha e Kaliut, brook on serpentine beneath Mt. Kreshtës, 30.05.2008 (6C), N41°32.508' E20°12.390', 1730m; singled.

500: Dibër district, Kreshtës Mts, brook on serpentine at Kloxhet Pass, 31.05.2008 (7A), N41°33.585' E20°13.418', 1880m; singled.

501: Dibër district, Kreshtës Mts, brook on serpentine near Balgjajt Lake, 31.05.2008 (7B), N41°34.416' E20°13.055', 1805m; singled.

02–06.07.2008 (leg. Zoltán Barina, Dániel Pifkó, András Vojtkó)

502: Bulqizë district, Jablanica Mts, Steblevë, grassy dolina S of the village, 02.07.2008 (13863), N41°17.488' E20°28.102', 1765m; singled.

503: Bulqizë district, Jablanica Mts, Steblevë, Zill i Barik Stream S of the village, 03.07.2008 (13882), N41°17.336' E20°28.498', 1730m; singled.

504: Bulqizë district, Jablanica Mts, Steblevë, open brook SE of the village, 03.07.2008 (13930), N41°16.743' E20°30.062', 1865m; singled.

505: Librazhd district, Jablanica Mts, Qarishtë, limestone rocks on Mt. Lapa, E of the village, 04.07.2008 (13955), N41°14.987' E20°30.263', 2015m; singled.

506: Librazhd district, Jablanica Mts, Qarishtë, rocky grassland on Mt. Lapa, E of the village, 04.07.2008 (005), N41°15.032' E20°30.202', 1960m; singled.

507: Librazhd district, Jablanica Mts, Qarishtë, rocky grassland on Mt. Lapa, E of the village, 04.07.2008 (13960), N41°15.032' E20°30.230', 2000m; singled.

508: Librazhd district, Jablanica Mts, Qarishtë, open brook E of the village, 04.07.2008 (13797), N41°14.741' E20°30.743', 1900m; singled.

509: Librazhd district, Shebenik Mts, Qarishtë, rocks on Mt. Shebenik, SE of the village, 06.07.2008 (14039), N41°12.599' E20°27.946', 2130m; singled.

510: Librazhd district, Shebenik Mts, Qarishtë, alpine lake on Mt. Shebenik, S of the village, 06.07.2008 (14041), N41°12.473' E20°27.823', 2105m; singled.

24.04–03.05.2009 (leg. Zoltán Barina, László Lőkös, Dániel Pifkó)

511: Mat district, Shkanderbeu Mts, Shkopet, scrubland on the N foothills of Mt. Mëllezhi, at the village, 24.04.2009 (090424_16), N41°41.632' E19°49.292', 80m; singled.

512: Mat district, Shkanderbeu Mts, Shkopet, limestone rocks on the N foothills of Mt. Mëllezhi, at the village, 24.04.2009 (090424_14653), N41°41.458' E19°49.375', 275m; singled.

513: Kurbin district, Laç, Kisha e Laçit, shrub forest on limestone above the village, 25.04.2009 (090425_14684), N41°37.853' E19°43.993', 340m; singled.

514: Krujë district, Shkanderbeu Mts, Krujë, limestone rocks on the N ridge of Mt. Sarisalltëk, N of the city, 25.04.2009 (090425_14691), N41°31.806' E19°47.539', 525m; singled.

515: Kavajë district, Stërberg-Bragash, open grassland on flish, on the hills E of the village, 28.04.2009 (090428_14803), N41°06.568' E19°32.128', 90m; singled.

516: Vlorë district, Çikë Mts, Dhërmi, limestone rocks in the valley beneath Mt. Pandelejmoni, N of the village, 29.04.2009 (090429_14848), N40°09.689' E19°39.011', 340m; singled.

517: Sarandë district, Fakar, open oak forest on limestone, near to the village, 30.04.2009 (090430_14906), N39°49.359' E20°03.920', 10m; singled.

518: Sarandë district, Vurgu i Ri, dry gorge on the N part of Mt. Miles, S of the village, 30.04.2009 (090430_14933), N39°46.357' E20°04.400', 110m; singled.

519: Sarandë district, Vurgu i Ri, limestone rocks on the N part of Mt. Miles, S of the village, 30.04.2009 (090430_14954), N39°45.443' E20°04.909', 110m; singled.

520: Gjirokastrë district, Gjerë Mts, Klishar, grassland on limestone in the valley between Mt. Paljemendra and Mt. Turla e Karias, W of the village, 02.05.2009 (090502_15037), N39°51.306' E20°18.533', 955m; singled.

521: Gjirokastrë district, Gjerë Mts, Klishar, grassland on limestone on the S ridge of Mt. Turla e Karias, W of the village, 02.05.2009 (090502_81), N39°50.714' E20°18.398', 1235m; singled.

522: Kolonjë district, Leskovik, limestone rocks on Mt. Melësin, at the edge of the city, 03.05.2009 (090502_15066), N40°08.861' E20°35.615', 785m; singled.

29.05–08.06.2009 (leg. Zoltán Barina, Gergely Lunk, Dániel Pifkó, Dávid Schmidt)

523: Tropojë district, Prokletije Mts, Markaj, limestone rocks W of the village, 29.05.2009 (090529_15141), N42°20.579' E20°01.923', 1000m; singled.

524: Tropojë district, Prokletije Mts, Markaj, open spring on the E slope of Mt. Shtyllë, W of the village, 30.05.2009 (090530_15142), N42°20.725' E20°01.426', 1220m; singled.

525: Tropojë district, Prokletije Mts, Markaj, beech forest on the E slope of Mt. Marbic, W of the village, 30.05.2009 (090530_15163), N42°21.997' E20°01.628', 1405m; singled.

526: Tropojë district, Prokletije Mts, Markaj, limestone rocks on the N slope of Mt. Marbic, W of the village, 30.05.2009 (090530_15180), N42°21.887' E20°01.042', 1745m; singled.

527: Tropojë district, Prokletije Mts, Markaj, rocky grassland on the E slope of Mt. Shtyllë, W of the

village, 01.06.2009 (090601_6), N42°20.920' E19°59.684', 1935m; singled.

528: Tropojë district, Prokletije Mts, Markaj, spring on the E slope of Mt. Shtyllë, W of the village, 01.06.2009 (090601_15228), N42°20.986' E20°00.236', 1800m; singled.

529: Tropojë district, Prokletije Mts, limestone rocks on the S slope of Mt. Cukali, 01.06.2009 (090601_15236), N42°21.119' E19°59.581', 1985m; singled.

530: Tropojë district, Prokletije Mts, Markaj, rocky grassland on the N slope of Mt. Shtyllë, W of the village, 01.06.2009 (090601_15238), N42°21.051' E19°59.464', 2025m; singled.

531: Tropojë district, Prokletije Mts, around shepherdman huts at the S foot of Mt. Dhivë, 02.06.2009 (090602_15248), N42°21.018' E19°58.928', 1845m; singled.

532: Tropojë district, Prokletije Mts, limestone rocks on a ridge S of Mt. Shtyllë, 02.06.2009 (090602_15263), N42°20.223' E20°00.348', 1570m; singled.

533: Tropojë district, Pac, Pac Stream in the village, 03.06.2009 (090603_15383), N42°17.846' E20°12.434', 555m; singled.

534: Tropojë district, Kam, Maljav Brook close to the village, 03.06.2009 (090603_15392), N42°16.437' E20°13.405', 575m; singled.

535: Tropojë district, Prokletije Mts, Dragobi, valley of Valbonë River above the village, 04.06.2009 (090604_15414), N42°27.642' E19°54.345', 890m; singled.

536: Tropojë district, Prokletije Mts, Valbonë, karstic beech forest on the S slope of Mt. Thatë, above the village, 04.06.2009 (090604_15446), N42°27.796' E19°53.182', 1510m; singled.

537: Tropojë district, Prokletije Mts, rocky grassland on the S slope of Mt Shkëlzen, 05.06.2009 (090605_15507), N42°26.977' E20°07.889', 2065m; singled.

538: Tropojë district, Prokletije Mts, rocky grassland on a peak SW of Mt Shkëlzen, 06.06.2009 (090606_15508), N42°26.990' E20°07.199', 1970m; singled.

539: Tropojë district, Prokletije Mts, rocky grassland at the N foot of cliffs of Mt. Shkëlzen, 06.06.2009 (090606_15545), N42°27.793' E20°07.546', 2020m; singled.

540: Tropojë district, Prokletije Mts, grassland N of Mt. Shkëlzen, 06.06.2009 (090606_15548), N42°28.068' E20°07.337', 2045m; singled.

541: Tropojë district, Prokletije Mts, open stream on Mt. Tringëllimes, 07.06.2009 (090607_15554), N42°28.486' E20°07.201', 2000m; singled.

542: Tropojë district, Prokletije Mts, open brook on the S slope of Mt. Callum, 07.06.2009 (090607_42), N42°29.026' E20°07.570', 2055m; singled.

543: Tropojë district, Prokletije Mts, open brook on the N slope of Mt. Callum, 07.06.2009 (090607_44), N42°29.917' E20°07.466', 1970m; singled.

544: Tropojë district, Prokletije Mts, open brook on the NE ridge of Mt. Callum, 08.06.2009 (090608_15641), N42°30.399' E20°08.171', 1680m; singled.

545: Tropojë district, Prokletije Mts, Tropojë, valley of Tropojë Stream N of the city, 08.06.2009 (090608_45), N42°30.305' E20°08.893', 1470m; singled.

546: Tropojë district, Prokletije Mts, Tropojë, valley of Tropojë Stream N of the city, 08.06.2009 (090608_15676), N42°29.714' E20°09.020', 1315m; singled.

547: Tropojë district, Prokletije Mts, Tropojë, adler forest in the valley of Tropojë Stream, N of the city, 08.06.2009 (090608_15678), N42°29.239' E20°08.972', 1225m; singled.

548: Tropojë district, Prokletije Mts, Tropojë, Tropojë Stream N the city, 08.06.2009 (090608_48), N42°28.617' E20°09.063', 1110m; singled.

549: Tropojë district, Prokletije Mts, Tropojë, limestone gorge of Tropojë Stream N the city, 08.06.2009 (090608_15688), N42°28.496' E20°09.110', 1100m; singled.

550: Tropojë district, Prokletije Mts, Tropojë, spring in the Tropojë valley, N of the city, 08.06.2009 (090608_50), N42°24.778' E20°09.553', 555m; singled.

03–11.08.2009 (leg. Zoltán Barina, Dániel Pifkó)

551: Elbasan district, Shpat Mts, Zavalinë, limestone rocks above the village, 04.08.2009 (090804_15735), N40°59.990' E20°14.850', 1115m; singled.

552: Tiranë district, Gropë Mts, mouth of a cave on the limestone plateau of Mt. Mëceku, 06.08.2009 (090806_15866), N41°22.664' E20°01.975', 1615m; singled.

553: Mat district, Dejë Mts, Macukull, dolina in beech forest above the village, 08.08.2009 (090808_15890), N41°41.446' E20°08.809', 1470m; singled.

554: Mat district, Dejë Mts, Macukull, karstic beech forest above the village, 08.08.2009 (090808_15904), N41°41.317' E20°09.343', 1700m; singled.

555: Mat district, Dejë Mts, Macukull, rocky grassland above the village, 08.08.2009 (090808_15919), N41°41.266' E20°09.406', 1745m; singled.

556: Mat district, Dejë Mts, dolina near Shkol-Den Pass, 09.08.2009 (090809_15973), N41°41.415' E20°09.952', 1940m; singled.

557: Pukë district, Munellë Mts, beech forest on limestone on the S slope of the plateau, 11.08.2009 (090811_29), N41°58.018' E20°05.386', 1605m; singled.

558: Pukë district, Munellë Mts, rocky grassland on Mt. Madhë, 11.08.2009 (090811_16040), N41°57.694' E20°06.014', 1870m; singled.

559: Pukë district, Munellë Mts, limestone scree on the W slope of the plateau, 11.08.2009 (090811_16064), N41°58.101' E20°05.527', 1655m; singled.

560: Pukë district, Munellë Mts, Mushtë, dry grassland on serpentine in the village, 11.08.2009 (090811_16086), N41°56.843' E20°04.268', 1060m; singled.

22–30.03.2010 (leg. Zoltán Barina, Dániel Pifkó, Balázs Pintér)

561: Kolonjë district, Leskovik, limestone rocks on the W slope of Mt. Shëlegur, NE of the city, 22.03.2010 (100322_16), N40°10.868' E20°39.703', 1390m; singled.

562: Përmet district, Nemerçkë Mts, Draçovë, Draçovë Stream SW of the village, 23.03.2010 (100323_18), N40°07.523' E20°28.300', 440m; singled.

563: Sarandë district, Sarandë, rocky grassland on limestone on the W slope of Mt. Lëkurës, in the S part of the city, 24.03.2010 (100324_16224), N39°51.878' E20°01.313', 110m; singled.

564: Sarandë district, Çifliq, limestone rocks on Mt. Xtoi, NE of the village, 25.03.2010 (100325_16258), N39°40.933' E20°07.739', 70m; singled.

565: Vlorë district, Vuno, seashore limestone walls at the mouth of Canion Gjipesë, beneath the village, 28.03.2010 (100328_37), N40°07.740' E19°40.387', 5m; singled.

566: Pukë district, Suçeli Mts, Gjegjan, roadside spring on serpentine, above the village, 29.03.2010 (100329_41), N41°55.555' E19°59.713', 375m; singled.

567: Pukë district, Suçeli Mts, Gojani, brook on serpentine, below a watermill at the village, 29.03.2010 (100329_42), N41°59.195' E19°59.666', 410m; singled.

568: Shkodër district, Prokletije Mts, Dedaj, limestone gorge of Thatë Stream at the village, 30.03.2010 (100330_49), N42°17.591' E19°31.997', 455m; singled.

17–24.05.2010 (leg. Zoltán Fehér, Dávid Murányi, Zolt Ujvári - sites 8-11 and 38-42 with Zoltán Barina and Dániel Pifkó)

569: Dibër district, Korab Mts, Radomirë, spring, stream and streamside vegetation E of the village, 17.05.2010 (2010/3), N41°49.032' E20°30.016', 1440m; singled, beaten, waternet, soil sample (moss).

570: Dibër district, Korab Mts, open brook above Fushë Korabit, 17.05.2010 (2010/4), N41°49.251' E20°31.543', 1940m; singled, waternet.

571: Dibër district, Korab Mts, torrent beneath Fushë Korabit, 17.05.2010 (2010/5), N41°49.209' E20°30.745', 1770m; singled, beaten, waternet, soil samples (soil, moss).

572: Dibër district, Korab Mts, open brook and wet grassland beneath Fushë Korabit, 17.05.2010 (2010/6), N41°49.228' E20°30.290', 1595m; singled, beaten, waternet.

573: Dibër district, Korab Mts, Radomirë, limestone rocks E of the village, 17.05.2010 (2010/7), N41°49.146' E20°30.145', 1510m; singled.

574: Dibër district, Korab Mts, Radomirë, torrent E of the village, 17.05.2010 (2010/7B), N41°49.152' E20°30.111', 1495m; singled, beaten, waternet.

575: Dibër district, Korab Mts, Radomirë, oak forest W of the village, 17.05.2010 (2010/8), N41°49.307' E20°27.552', 995m; soil sample (moss).

576: Dibër district, Dejë Mts, Lunarë, limestone rocks, Murrë River and its sidespring at the bridge, 18.05.2010 (2010/9), N41°37.535' E20°14.990', 730m; singled, beaten, waternet, soil sample (moss from tree bark).

577: Mat district, Dejë Mts, Varoshit Stream and pasture at Shkanderbeu Cliff, N of Murrë Pass, 18.05.2010 (2010/10), N41°38.791' E20°11.408', 970m; singled, beaten, waternet, soil sample (litter).

578: Mat district, Dejë Mts, acidous grassland, beech forest and sidestream of Varoshit Stream along the road to Lurë area, 18.05.2010 (2010/11), N41°39.824' E20°11.720', 1215m; singled, beaten, waternet, soil samples (beech litter, moss).

579: Mat district, Dejë Mts, limestone rocks in the upper valley of Varoshit Stream, along the road to Lurë area, 18.05.2010 (2010/12), N41°39.905' E20°12.497', 1360m; singled.

580: Mat district, Dejë Mts, boggy spring section of Varoshit Stream, 18.05.2010 (2010/13), N41°40.562' E20°12.601', 1525m; singled, beaten, waternet.

581: Mat district, Dejë Mts, limestone rocks and beech forest above the spring section of Varoshit Stream, 18.05.2010 (2010/13B), N41°40.479' E20°12.669', 1540m; singled, soil samples (beech litter, bird nest).

582: Mat district, Dejë Mts, limestone rocks W of Shkanderbeu Cliff, N of Murrë Pass, 18.05.2010 (2010/14), N41°38.763' E20°10.841', 1160m; singled.

583: Mat district, Dejë Mts, Macukull, limestone rocks E of the village, 19.05.2010 (2010/15), N41°41.774' E20°07.999', 1265m; singled, soil sample (moss from rocks).

584: Mat district, Dejë Mts, Macukull, rocky forest E of the village, 19.05.2010 (2010/16), N41°41.825' E20°08.171', 1280m; singled, beaten, soil sample (moss).

585: Mat district, Ulëz, limestone rocks and macchia above Mat River, W of the village, 19.05.2010 (2010/17), N41°41.746' E19°48.883', 70m; singled.

586: Lezhë district, Pllanë, limestone rocks and macchia at the village, 19.05.2010 (2010/18), N41°42.018' E19°42.319', 65m; singled.

587: Mirditë district, Shent Mts, Kurbnesh, limestone rocks, Urakës River and its sidespring NE of the city, 20.05.2010 (2010/19), N41°47.711' E20°06.703', 800m; singled, beaten, waternet, soil sample (moss).

588: Dibër district, Lurë area, Mërkuth, limestone rocks S of the village, 20.05.2010 (2010/20), N41°48.808' E20°08.384', 1015m; singled, soil samples (soil, moss).

589: Dibër district, Lurë area, Humbla, stream and pine forest SE of the village, 20.05.2010 (2010/21), N41°48.127' E20°09.272', 1215m; singled, beaten, waternet, soil sample (soil).

590: Dibër district, Lurë area, Humbla, brook and pine forest E of the village, 20.05.2010 (2010/22), N41°48.353' E20°09.415', 1170m; singled, beaten, waternet.

591: Dibër district, Lurë area, Humbla, Humbla Stream E of the village, 20.05.2010 (2010/23), N41°48.498' E20°09.506', 1155m; singled, beaten, waternet.

592: Dibër district, Lurë area, Krej Lurë, large temporary pool in a pasture at the village, 20.05.2010 (2010/24), N41°50.167' E20°10.440', 970m; plancton sample (temporary pool).

593: Dibër district, Lurë area, Fushë Lurë, inflowing brooks, beech forest and puddles at Vogël Lake, 20.05.2010 (2010/25), N41°47.552' E20°11.675', 1700m; singled, beaten, waternet, soil samples (beech litter, moss), plancton sample (forest puddle).

594: Dibër district, Lurë area, Fushë Lurë, small bog beneath the lakes, 20.05.2010 (2010/26), N41°47.595' E20°12.308', 1585m; waternet.

595: Dibër district, Lurë area, Fushë Lurë, beech forest beneath the lakes, 20.05.2010 (2010/27), N41°47.758' E20°12.599', 1410m; singled, soil sample (beech litter).

596: Dibër district, Lurë area, Fushë Lurë, brook in pine forest S of the village, 21.05.2010 (2010/28), N41°48.547' E20°12.598', 1155m; singled, beaten, waternet, soil samples (pine litter, moss).

597: Mirditë district, Prosec, pine forest E of the village, 21.05.2010 (2010/29), N41°44.706' E19°58.371', 315m; singled, soil samples (soil, moss).

598: Mirditë district, Oroshi area, Bulsharë, pine forest N of the village, 21.05.2010 (2010/30), N41°51.095' E20°03.896', 515m; singled, soil samples (pine litter, moss).

599: Mirditë district, Oroshi area, Ndërshenë, brook in a pine forest at the village, 21.05.2010 (2010/31), N41°49.898' E20°05.480', 990m; singled, beaten, waternet, soil sample (moss).

600: Mirditë district, Oroshi area, Ndërshenë, karst spring and rocks N of the village, 21.05.2010 (2010/32), N41°50.539' E20°05.671', 1160m; singled, beaten, waternet, soil samples (soil, moss).

601: Mirditë district, Oroshi area, Ndërshenë, limestone rocks N of the village, 21.05.2010 (2010/33), N41°51.034' E20°05.842', 1135m; singled, soil sample (moss).

602: Mirditë district, Shent Mts, limestone rocks, beech forest and puddles on the W edge of the great plateau, 21.05.2010 (2010/34), N41°51.274' E20°07.302', 1365m; singled, soil sample (beech litter), plancton sample (temporary puddles on dirt road).

603: Mirditë district, Oroshi area, Nanshenë, open stream in the village, 21.05.2010 (2010/35), N41°51.848' E20°07.088', 1175m; singled, beaten, waternet.

604: Mirditë district, Oroshi area, Nanshenë, limestone rocks in the village, 21.05.2010 (2010/36), N41°52.154' E20°07.118', 1165m; singled, soil sample (moss from rocks).

605: Mirditë district, Oroshi area, Nanshenë, limestone rocks N of the village, 21.05.2010 (2010/37), N41°52.240' E20°06.510', 1045m; singled.

606: Has district, Pashtrik Mts, Domaj Has, Gurra Domaj Has Spring in the village, 22.05.2010 (2010/38), N42°08.309' E20°29.403', 440m; singled, beaten, waternet.

607: Has district, Pashtrik Mts, Salghinë, open karst forest N of the village, 22.05.2010 (2010/39), N42°11.541' E20°32.258', 945m; singled, beaten, soil sample (litter).

608: Has district, Pashtrik Mts, Salghinë, rocky forest N of the village, 22.05.2010 (2010/40), N42°12.046' E20°31.998', 1405m; singled, beaten, soil samples (soil, litter).

609: Has district, Pashtrik Mts, Salghinë, forest cave N of the village, 22.05.2010 (2010/41), N42°12.171' E20°32.027', 1415m; singled, soil samples (litter, moss).

610: Has district, Pashtrik Mts, limestone rocks and alpine grassland beneath the peak region, 22.05.2010 (2010/42), N42°12.417' E20°31.709', 1730m; singled, soil sample (soil).

611: Shkodër district, Mes, Kir River, riverside macchia and limestone rocks at Mesi Bridge, 23.05.2010 (2010/43), N42°06.874' E19°34.483', 50m; singled, beaten, waternet.

612: Shkodër district, Prokletije Mts, Drisht, limestone rocks N of the village, 23.05.2010 (2010/44), N42°07.491' E19°36.222', 95m; singled.

613: Shkodër district, Prokletije Mts, Ura e Shtrenjtë, ruderalia and a sidestream of Kir River in the village, 23.05.2010 (2010/45), N42°08.503' E19°38.846', 110m; singled.

614: Shkodër district, Prokletije Mts, Prekal, limestone rocks S of the village, 23.05.2010 (2010/46), N42°09.899' E19°41.709', 190m; singled.

615: Shkodër district, Prokletije Mts, Prekal, Zhyla Cave and Kir River in the village, 23.05.2010 (2010/47), N42°10.718' E19°43.205', 215m; singled, beaten, waternet, soil sample (moss).

616: Shkodër district, Prokletije Mts, Prekal, limestone rocks N of the village, 23.05.2010 (2010/48), N42°12.420' E19°42.544', 315m; singled.

617: Shkodër district, Prokletije Mts, Kir, rocky torrent and secondary forest S of the village, 23.05.2010 (2010/49), N42°12.854' E19°42.349', 320m; singled, beaten, waternet, soil samples (litter, moss).

618: Shkodër district, Prokletije Mts, Kir, limestone rocks E of the village, 23.05.2010 (2010/50), N42°14.717' E19°43.015', 870m; singled.

619: Shkodër district, Prokletije Mts, Kir, forest brook and limestone rocks E of the village, 23.05.2010 (2010/51), N42°14.422' E19°43.682', 990m; singled, beaten, waternet, soil sample (litter).

620: Shkodër district, Prokletije Mts, Nicaj-Shosh, nut forest W of the village, 23.05.2010 (2010/52), N42°14.249' E19°44.330', 1210m; singled.

621: Shkodër district, Prokletije Mts, Nicaj-Shosh, limestone rocks and rocky stream W of the village, 23.05.2010 (2010/53), N42°15.082' E19°44.873', 980m; singled.

622: Shkodër district, Prokletije Mts, Breg-Lumi, limestone rocks above Shalë River, S of the village, 23.05.2010 (2010/54), N42°17.386' E19°47.810', 335m; singled.

623: Shkodër district, Prokletije Mts, Breg-Lumi, Shalë River and its gallery in the village, 23.05.2010 (2010/55), N42°18.258' E19°47.814', 360m; singled, beaten, waternet.

624: Shkodër district, Prokletije Mts, Okol, beech forest in the village, 23.05.2010 (2010/56), N42°24.077' E19°45.948', 840m; soil sample (beech litter, moss).

625: Shkodër district, Prokletije Mts, Okol, beech forest along the road towards Terthorë Pass, W of the village, 24.05.2010 (2010/57), N42°24.097' E19°45.462', 980m; soil sample (beech litter).

626: Shkodër district, Prokletije Mts, Okol, karst spring outlet along the road towards Terthorë Pass, 24.05.2010 (2010/58), N42°23.256' E19°44.202', 1660m; singled, soil sample (beech litter).

627: Malësi e Madhe district, Prokletije Mts, Bogë, artificial pond in a pasture, E of the village, 24.05.2010 (2010/59), N42°23.826' E19°41.801', 1195m; plancton sample (artificial pond).

**19–26.05.2010 (leg. Zoltán Barina, Dániel Pifkó
– apart from the jointly collected sites of the
previous tour)**

628: Mat district, Dejë Mts, rocky forest S of Mt. Lajë, 18.05.2010 (100518_25), N41°40.603' E20°12.810', 1605m; singled.

629: Dibër district, Dejë Mts, temporary stream in the spring area of Sëte Stream, 19.05.2010 (F), N41°41.181' E20°13.218', 1415m; singled.

630: Dibër district, Dejë Mts, rocky grassland on the ridge of Mt. Lajë, 19.05.2010 (100519_16991), N41°41.516' E20°12.773', 1675m; singled.

631: Dibër district, Dejë Mts, boggy spring in the spring area of Sëte Stream, N of Kshëz Pass, 19.05.2010 (100519_17010), N41°40.873' E20°13.998', 1455m; singled.

632: Dibër district, Dejë Mts, rocky grassland close to the ridge of M. Runja, 19.05.2010 (100519_29), N41°41.386' E20°15.341', 1625m; singled.

633: Dibër district, Dejë Mts, Hurdhë Muhur, open brook E of the village, 20.05.2010 (100520_17040), N41°41.199' E20°17.389', 895m; singled.

634: Kukës district, Gjalice e Lumës Mts, Nangë, shrubby forest above the village, 23.05.2010 (100523_17217), N41°59.576' E20°25.602', 715m; singled.

635: Kukës district, Gjalice e Lumës Mts, Stabi i Sasatit, forest spring above the village, 23.05.2010 (100523_47), N42°00.479' E20°26.765', 1485m; singled.

636: Mirditë district, Munellë Mts, Domgjon, forest brook above the village, 25.05.2010 (100525_52), N41°58.617' E20°07.543', 1295m; singled.

637: Mirditë district, Munellë Mts, rocky grassland on the plateau, 25.05.2010 (100525_54), N41°59.170' E20°06.827', 1865m; singled.

638: Mirditë district, Munellë Mts, Domgjon, spring above the village, 26.05.2010 (100526_17389), N41°58.653' E20°06.922', 1435m; singled.

639: Mirditë district, Munellë Mts, Domgjon, beech forest above the village, 26.05.2010 (100526_17392), N41°58.301' E20°07.010', 1380m; singled.

640: Mirditë district, Munellë Mts, Domgjon, serpentine rocks above the village, 26.05.2010 (14), N41°57.128' E20°07.829', 1145m; singled.

10–16.07.2010 (leg. Dávid Murányi, accompanied with 11 students of the Alternative Secondary School of Economics, Budapest, leading teachers Zoltán Marsi, László Halász)

641: Malësi e Madhe district, Prokletije Mts, Xhajë, brick walls of the local pub, 10.07.2010 (2010/2/2), N42°19.810' E19°36.062', 650m; singled.

642: Shkodër district, Prokletije Mts, shallow alpine lake at Terthorë Pass, 11.07.2010 (2010/2/3), N42°23.389' E19°43.535', 1690m; singled, waternet, sweeping net, plankton sample (shallow alpine lake).

643: Shkodër district, Prokletije Mts, Okol, karst spring outlet along the road towards Terthorë Pass, 11.07.2010 (2010/2/4), N42°23.256' E19°44.202', 1620m; singled.

644: Shkodër district, Prokletije Mts, Okol, forest edge along the road towards Terthorë Pass, 11.07.2010 (2010/2/5), N42°23.245' E19°45.493', 1510m; singled.

645: Shkodër district, Prokletije Mts, Peçakeq Lakes and limestone rocks at Pejë Pass, 12.07.2010 (2010/2/6), N42°26.814' E19°46.235', 1620m; singled, waternet, plankton sample (shallow alpine lake).

646: Shkodër district, Prokletije Mts, limestone rocks and alpine grassland on the E slope of Mt. Harapë, 12.07.2010 (2010/2/7), N42°26.616' E19°45.714', 1950m; singled.

647: Shkodër district, Prokletije Mts, limestone rocks in the peak region of Mt. Harapë, 12.07.2010 (2010/2/8), N42°26.741' E19°45.364', 2220m; singled.

648: Shkodër district, Prokletije Mts, Okol, rocky grassland along the path towards Pejë Pass, N of the village, 13.07.2010 (2010/2/9), N42°26.536' E19°46.344', 1380m; singled.

649: Shkodër district, Prokletije Mts, Okol, karst spring and the shore vegetation towards Pejë Pass, N of the village, 13.07.2010 (2010/2/10), N42°25.664' E19°45.704', 990m; singled, beaten, waternet.

650: Shkodër district, Prokletije Mts, Okol, garden of the Kamping-Restaurant-Bar in the village, 13.07.2010 (2010/2/11), N42°24.306' E19°45.483', 920m; singled.

651: Durrës district, Hamallaj, sandy seashore N of the village, 15.07.2010 (2010/2/12), N41°29.334' E19°30.645', 0m; singled.

652: Pogradec district, Lin, shore of the Ohrid Lake in the village, 16.07.2010 (2010/2/13), N41°03.982' E20°38.613', 730m; singled, waternet.

653: Pogradec district, Pishkukat, shore of the Ohrid Lake at Hotel Leon, 16.07.2010 (2010/2/14), N41°01.152' E20°38.196', 730m; singled, waternet.

12–15.07.2010 (leg. Zoltán Barina, Dániel Pifkó, Gellért Puskás, Barnabás Sárospataki)

654: Malësi e Madhe district, Prokletije Mts, Bogë, rocky grassland on the S slope of Mt. Dragomir, W of the village, 11.07.2010 (1), N42°24.167' E19°38.278' – N42°24.127' E19°37.089', 1100–1850m; singled.

655: Malësi e Madhe district, Prokletije Mts, Bogë, spring at a cave on the S slope of Mt. Dragomir, W of the village, 11.07.2010 (2), N42°24.274' E19°38.039', 1230m; singled.

656: Malësi e Madhe district, Prokletije Mts, rocky grassland and beech forest edge along the way Mt. Dragomir – Mt. Borë – Bjeshkë Mekzezë, 12.07.2010 (3), N42°24.127' E19°37.089' – N42°25.140' E19°38.608', 1650–1850m; singled.

657: Malësi e Madhe district, Prokletije Mts, wet vegetation in a doline W of Bjeshkë Jaraku, towards Mt. Bridashe, 12.07.2010 (4), N42°25.140' E19°38.608', 1810m; singled.

658: Malësi e Madhe district, Prokletije Mts, rocky grassland along the way Mt. Bridashe – pass at the NE foot of Mt. Ergu, 13.07.2010 (5), N42°25.140' E19°38.608' – N42°25.205' E19°40.037', 1800–1950m; singled.

659: Malësi e Madhe district, Prokletije Mts, rocky grassland along the way NE foot of Mt. Ergu – S foot of Mt. Kuç towards Mushkë Pass, 13.07.2010 (6), N42°25.300' E19°40.301' – N42°25.846' E19°41.560', 1950–2150m; singled.

660: Malësi e Madhe district, Prokletije Mts, rocky grassland at Mushkë Pass, 13.07.2010 (7), N42°25.846' E19°41.560', 2150m; singled.

661: Malësi e Madhe district, Prokletije Mts, rocky grassland along the way Mushkë Pass – pasture Surta e Bogës, 13.07.2010 (8), N42°25.846' E19°41.560' – N42°26.210' E19°42.168', 1850–2150m; singled.

662: Malësi e Madhe district, Prokletije Mts, mountain pasture and rocky grassland N of pasture Surta e Bogës, 14.07.2010 (9), N42°26.801' E19°42.651' – N42°27.468' E19°42.909', 1750–1800m; singled.

663: Malësi e Madhe district, Prokletije Mts, limestone rocks and Bogë Lake N of pasture Surta e Bogës, 14.07.2010 (10), N42°27.017' E19°42.704', 1800m; singled.

664: Malësi e Madhe district, Prokletije Mts, spring and limestone rocks at Bogë Lake, N of pasture Surta e Bogës, 14.07.2010 (11), N42°27.468' E19°42.909', 1770m; singled.

665: Malësi e Madhe district, Prokletije Mts, Nikç, limestone rocks above Dobračë Pass, E of the village, 14.07.2010 (12), N42°27.665' E19°42.958', 1730m; singled.

666: Malësi e Madhe district, Prokletije Mts, rocky grassland on the W slope and peak of the mount above Bogë Lake, 14.07.2010 (13), N42°27.468' E19°42.909' – N42°27.114' E19°43.322', 1750–2120m; singled.

667: Malësi e Madhe district, Prokletije Mts, rocky grassland on the S slope and peaks of Mt. Shniku, 15.07.2010 (14), N42°27.695' E19°44.739' – N42°28.364' E19°44.236', 1900–2555m; singled.

668: Malësi e Madhe district, Prokletije Mts, spring on the W slope of Mt. Popluks, near Pejë Pass, 16.07.2010 (15), N42°27.343' E19°46.479', 1660m; singled.

669: Malësi e Madhe district, Prokletije Mts, rocky grassland along the way Pejë Pass – Vogl Pass, 16.07.2010 (16), N42°26.624' E19°46.302' – N42°27.701' E19°47.810', 1650–2100m; singled.

670: Malësi e Madhe district, Prokletije Mts, limestone rocks and snow-fields on the N slope of Mt. Malisorë and Mt. Jezercë, 16.07.2010 (17), N42°27.701' E19°47.810' – N42°26.647' E19°48.482', 2100–2500m; singled.

671: Shkodër district, Prokletije Mts, Okol, karst spring and beech forest edge towards Pejë Pass, N of the village, 16.07.2010 (18), N42°25.659' E19°45.700', 950m; singled.

672: Shkodër district, Prokletije Mts, Okol, beech forest along the road towards Terthorë Pass, 17.07.2010 (19), N42°24.1' E19°45.5', 1000m; singled.

673: Malësi e Madhe district, Koplík, city street, 17.07.2010 (20), N42°12.5' E19°26.2', 60m; singled.

Acknowledgements – Field work was supported by the Hungarian Scientific Research Fund (OTKA 72744, OTKA-NNF 78185), the János Bolyai Scholarship of the Hungarian Academy of Sciences and the National R&D Programme (3B023-0-4).

REFERENCES

- ANDRÁSSY, I. (2004): Free-living nematodes from Albania, including the description of three new species. *Nematologia Mediterranea*, 37: 73–88.
- ERŐSS, Z., FEHÉR, Z. & SZEKERES, M. (1999): Seven new taxa of the subfamily Alopinae (Gastropoda: Pulmonata: Clausiliidae) from the Balkans. *Annalen der Naturhistorischen Museen in Wien*, 101(B): 445–452.
- ERŐSS, Z., FEHÉR, Z. & SZEKERES, M. (2006): New taxa of *Montenegrina* O. Boettger, 1877 (Gastropoda: Pulmonata: Clausiliidae) from Albania and the neighbouring regions. *Annalen der Naturhistorischen Museen in Wien*, 107(B): 181–208.
- FEHÉR, Z. (2004): A revision of the genus *Cochlostoma*, subgenus *Titanopoma* (Gastropoda, Caenogastropoda, Cochlostomatidae), in particular the forms occurring in Albania. *Basteria*, 68: 25–44.
- FEHÉR, Z., DELI, T., SÓLYMOS, P. (2010): Revision of *Granaria frumentum* (Draparnaud 1801) (Mollusca, Gastropoda, Chondrinidae) subspecies occurring in the eastern part of the species' range. *Journal of Conchoogy*, 40: 201–217.
- FEHÉR, Z. & ERŐSS, Z. (2009a): Contribution to the Mollusca fauna of Albania. Results of the field trips of the Hungarian Natural History Museum between 1992 and 2007. *Schriften zur Malakozoologie*, 25: 3–21.
- FEHÉR, Z. & ERŐSS, Z. (2009b): Check list of the Albanian mollusca fauna. *Schriften zur Malakozoologie*, 25: 22–38.
- FEHÉR, Z., ERŐSS, Z., KONTSCHÁN, J. & MURÁNYI, D. (2004): Collecting sites of the zoological expeditions of the Hungarian Natural History Museum to Albania (1992–2003). *Folia historico-naturalia Musei Matraensis*, 28: 67–82.
- FEHÉR, Z., ERŐSS, Z. & VARGA, A. (2001): Contributions to the knowledge of the Albanian *Cochlostoma* fauna (Gastropoda: Cyclophoridae). *Schriften zur Malakozoologie*, 17: 71–78.
- KONTSCHÁN, J. (2003): Data to the Uropodina (Acari: Mesostigmata) fauna of Albania. *Folia entomologica hungarica*, 64: 5–18.
- MAHUNKA, S. & MAHUNKA-PAPP, L. (2008): Faunistic and taxonomical studies on oribatids collected in Albania (Acari: Oribatida), I. *Opuscula Zoologica, Budapest*, 37: 43–62.
- MURÁNYI, D. (2007): New and little-known stoneflies (Plecoptera) from Albania and the neighbouring countries. *Zootaxa*, 1533: 1–40.
- MURÁNYI, D. (2008): The first species of the genus *Megabunus* Meade, 1855 (Opiliones: Phalangiidae) in the Balkan region. *Opuscula Zoologica Budapest*, 39: 53–63.
- OLÁH, J. (2010): New species and new records of Palearctic Trichoptera in the material of the Hungarian Natural History Museum. *Annales Historico-Naturales Musei Nationalis Hungarici*, 102: 65–117.

- OLÁH, J., LODOVICI, O. & VALLE, M. (2011): A new species of *Potamophylax* (Trichoptera, Limnephilidae) from Albania. *Braueria*, 38: 13–14.
- RIEDEL, A., FEHER, Z. & EROSS, Z. (1999): Eine neue Zonitiden-Art (Gastropoda: Stylommatophora) aus Nord-Albanien. *Folia Malacologica*, 7: 241–244.
- SUBAI, P. (2008): Revision of the Argninae, 1. The species of *Agardhiella* from the countries bordering the Adriatic Sea (Gastropoda: Pulmonata: Pupillidae). *Archiv für Molluskenkunde*, 137: 75–103.
- SUBAI, P. (2009): New land snails from Montenegro and Albania (Mollusca: Gastropoda). *Archiv für Molluskenkunde*, 138: 103–112.
- SUBAI, P. & FEHÉR, Z. (2006): Revision of the Arianinae, 3. *Superba* gen. nov., with the description of three new species (Gastropoda: Pulmonata: Helicidae). *Archiv für Molluskenkunde*, 135: 205–224.
- TELEKI, P. & CSIKI, E. (eds.) (1923): *A Magyar Tudományos Akadémia Balkán-Kutatásainak Eredményei. I/1. Csiki Ernő Állattani Kutatásai Albániában (Explorationes Zoologicae ab E. Csiki in Albania Peractae. Pars I/1)*, Magyar Tudományos Akadémia, Budapest, 176 pp. + X tab.
- TELEKI, P. & CSIKI, E. (eds.) (1940): *A Magyar Tudományos Akadémia Balkán-Kutatásainak Eredményei I/2. Csiki Ernő Állattani Kutatásai Albániában (Explorationes Zoologicae ab E. Csiki in Albania Peractae. Pars I/2)*, Magyar Tudományos Akadémia, Budapest, 332 pp. + X tab.
- UJVÁRI, ZS. (2010): First records of zerconid mites (Acari: Mesostigmata: Zerconidae) from Albania, with description of three new species. *Opuscula Zoologica Budapest*, 41(1): 57–75.